

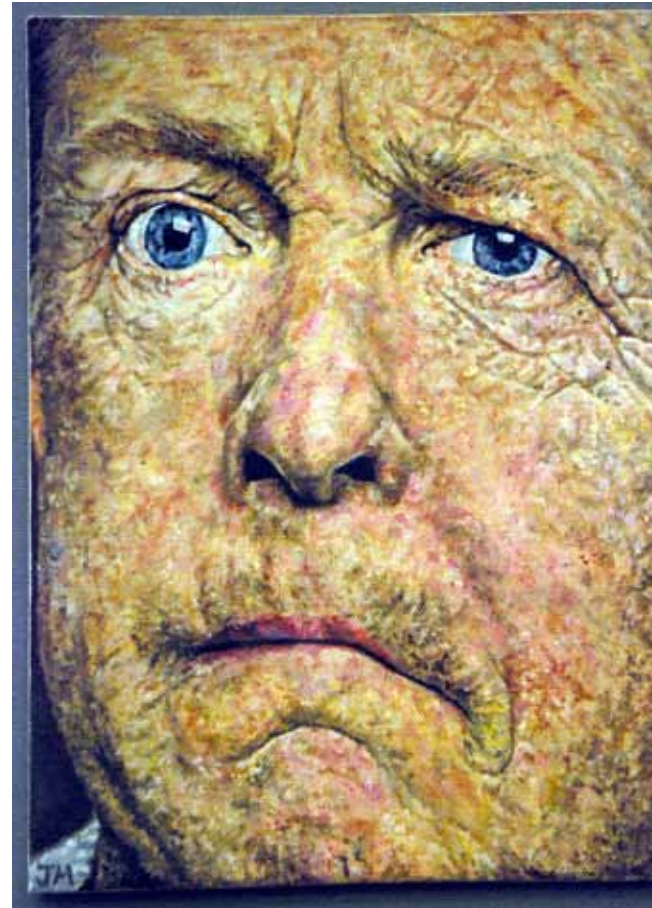


**Department of Anatomy & Human Sciences
and the Gordon Museum Art Exhibition 2010**

In sickness and in health

First prize

Jessica Maskell
Dental Institute
Stroke





Department of Anatomy & Human Sciences
and the Gordon Museum Art Exhibition 2010

In sickness and in health

Second prize

Claire Robinson
Florence Nightingale School of Nursing & Midwifery
In Sickness and in Health





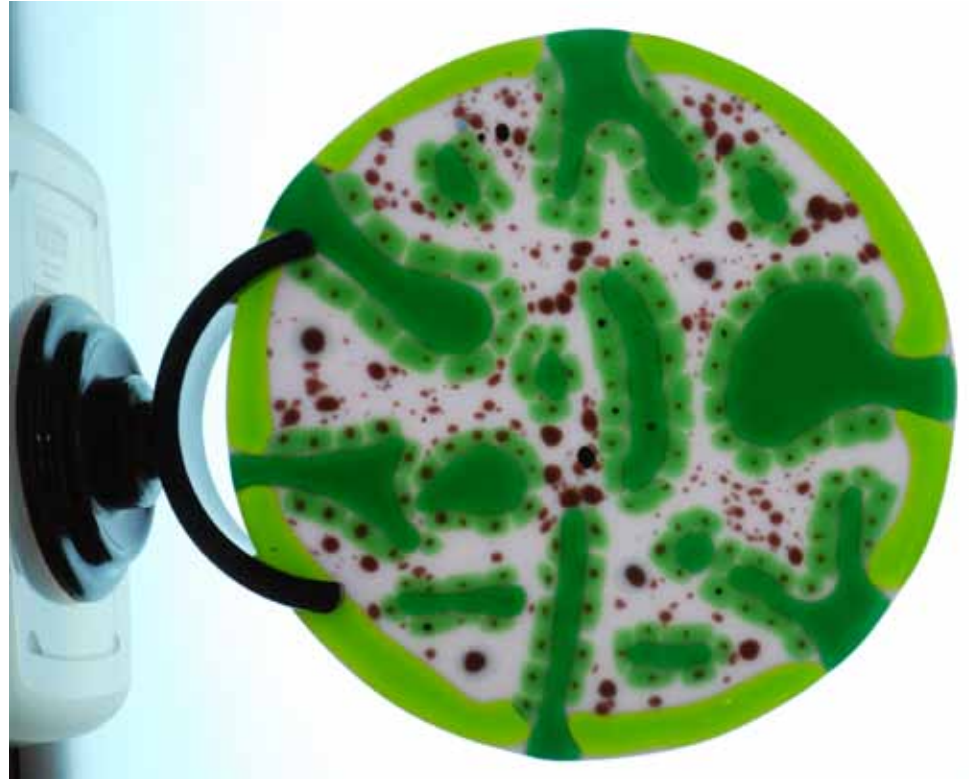
**Department of Anatomy & Human Sciences
and the Gordon Museum Art Exhibition 2010**

In sickness and in health

Third prize

Jim Cohen
MRC Centre for Developmental Neurobiology
Glazed Glands

◀ ▶ next





**Department of Anatomy & Human Sciences
and the Gordon Museum Art Exhibition 2010**

In sickness and in health

Fourth prize

Anna Dieleman
Dental Institute

In between darkness and red

◀ ▶ next

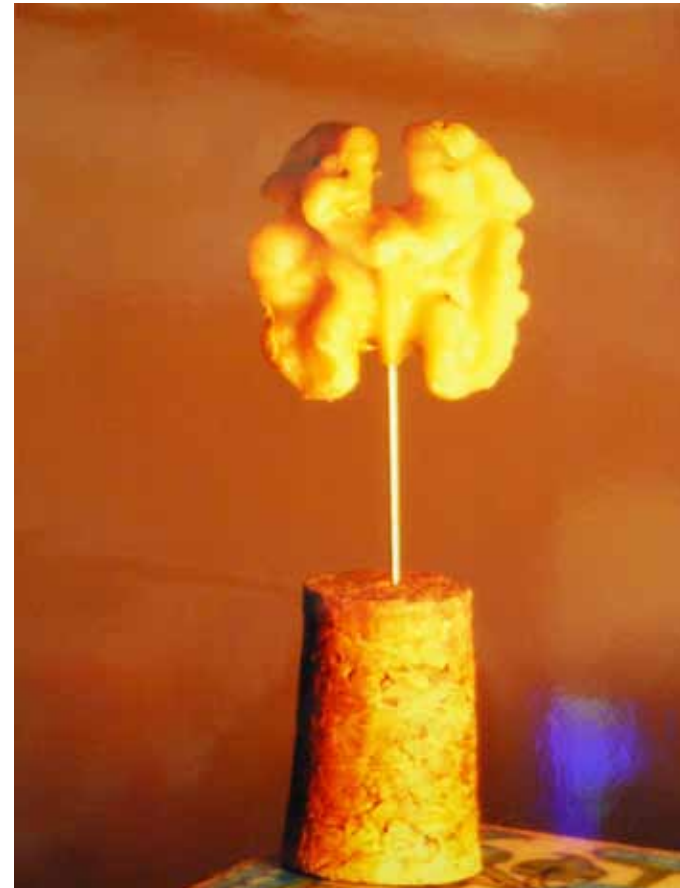




**Department of Anatomy & Human Sciences
and the Gordon Museum Art Exhibition 2010**

In sickness and in health

Eibhlin Collins
Institute of Psychiatry
Grey Area Matter

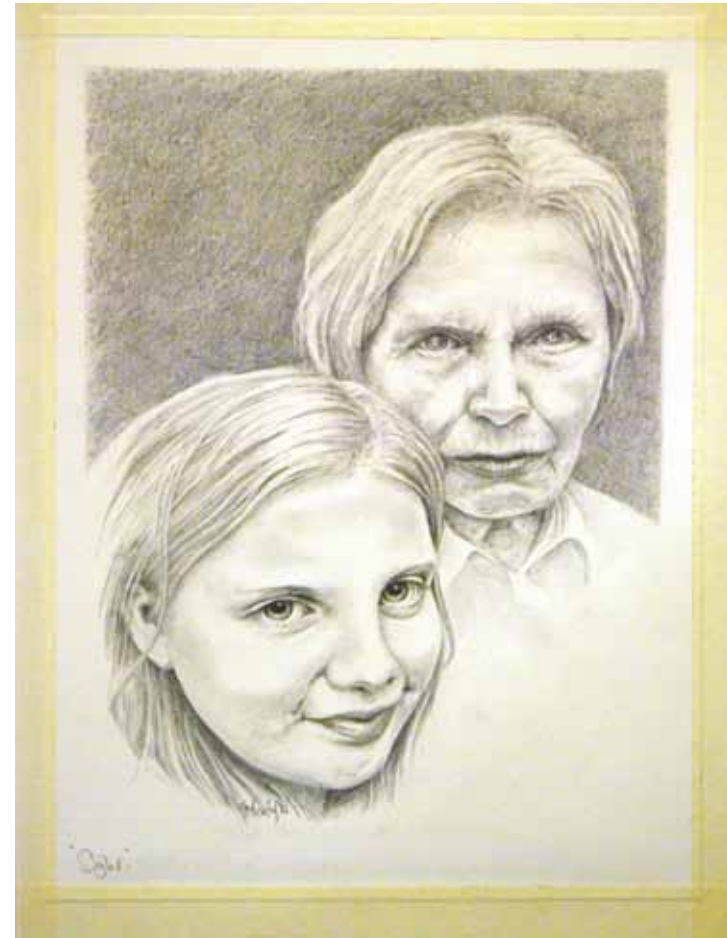




**Department of Anatomy & Human Sciences
and the Gordon Museum Art Exhibition 2010**

In sickness and in health

Faith Vardy
Florence Nightingale School of Nursing & Midwifery
Sight

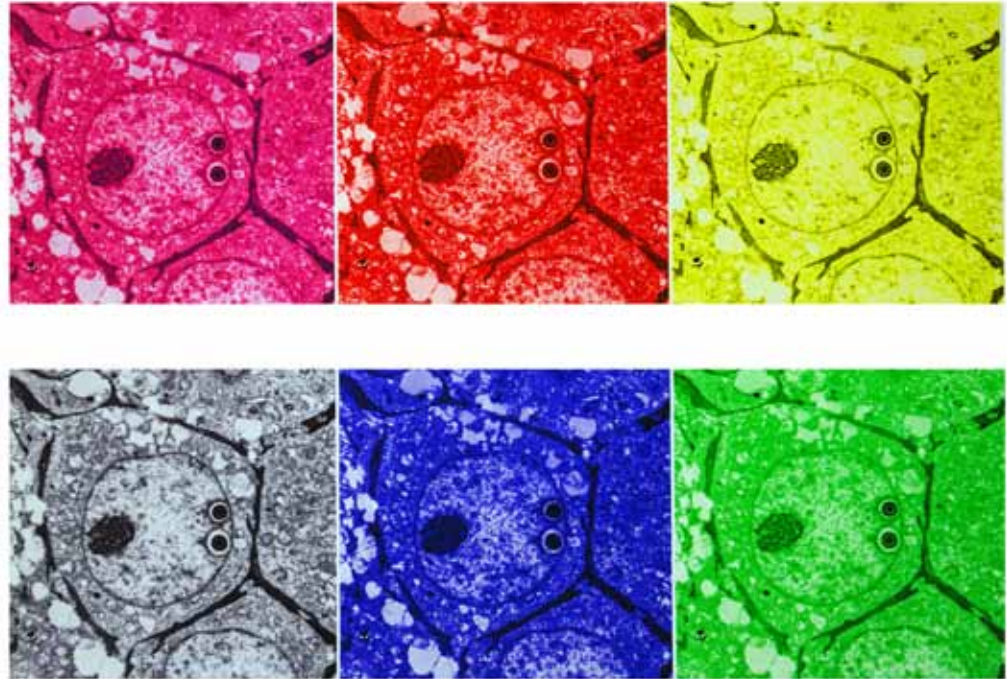




**Department of Anatomy & Human Sciences
and the Gordon Museum Art Exhibition 2010**

In sickness and in health

John Harrison
Dental Institute
It has its beady eyes on us





**Department of Anatomy & Human Sciences
and the Gordon Museum Art Exhibition 2010**

In sickness and in health

Eleri Bates
Florence Nightingale School of Nursing & Midwifery
Leaving the mother wanting





**Department of Anatomy & Human Sciences
and the Gordon Museum Art Exhibition 2010**

In sickness and in health

Katherine Paterson
Dental Institute
Flower into medicine – Digitalis purpurea





**Department of Anatomy & Human Sciences
and the Gordon Museum Art Exhibition 2010**

In sickness and in health

Rashida Pramanik
Dental Institute
Symbol of medicine

◀ ▶ next



⇒
**Department of Anatomy & Human Sciences
and the Gordon Museum Art Exhibition 2010**

In sickness and in health

Thuy Do
Dental Institute
Tinctures and potions

◀ ▶ next





**Department of Anatomy & Human Sciences
and the Gordon Museum Art Exhibition 2010**

In sickness and in health

Sarah Bartlett
School of Medicine
Vows

◀ ▶ next



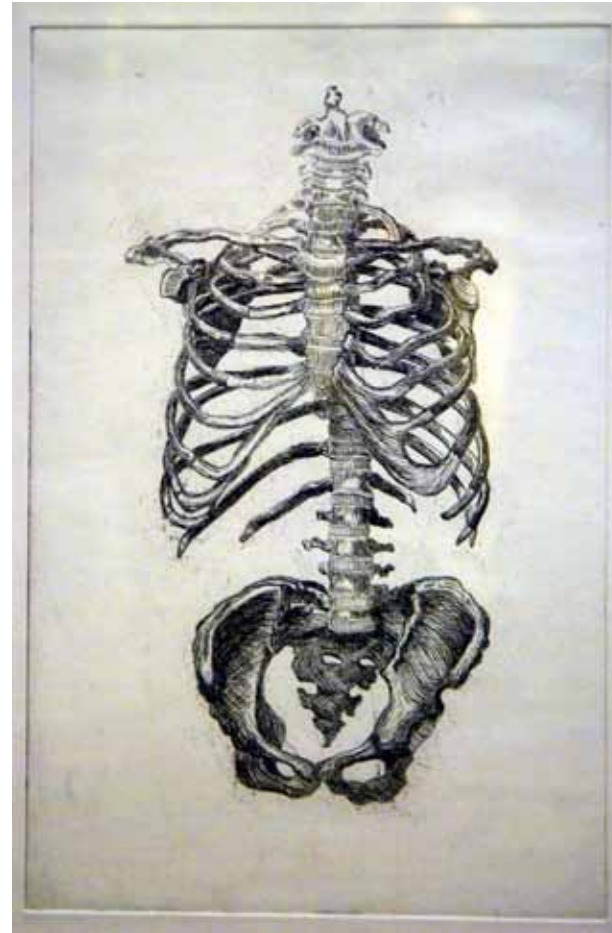


**Department of Anatomy & Human Sciences
and the Gordon Museum Art Exhibition 2010**

In sickness and in health

Christina Georgallou
Department of Physiology, School of Biomedical Sciences
Untitled

◀ ▶ next





**Department of Anatomy & Human Sciences
and the Gordon Museum Art Exhibition 2010**

In sickness and in health

Simon Hall
Department of Anatomy & Human Sciences
Professor Di Lawrence-Watt

◀ ▶ next

