

**Anyone** with an interest in the history of social work is welcome to attend.

There is no subscription. However **donations** to meet the cost of refreshments and speakers' expenses are greatly appreciated.

**Certificates of attendance** are available.

**Events** are publicised largely by e-mail and now generally attract 40-50 people each time.

**For further information contact**

**Dr Joan Rapaport**  
**SWHN Co-ordinator**  
**Social Care Workforce Research Unit**  
**Kings College**  
**Melbourne House**  
**44-46 Aldwych**  
**London WC2R 2LS**

**Email: [joan.rapaport@kcl.ac.uk](mailto:joan.rapaport@kcl.ac.uk)**  
**Tel: 0207 848 1769**

# SOCIAL WORK HISTORY NETWORK

## CO-ORDINATING GROUP

Joan Baraclough  
Keith Bilton  
Ruth Cartwright  
David George  
David N Jones  
Joan Rapaport

## SUPPORTED BY



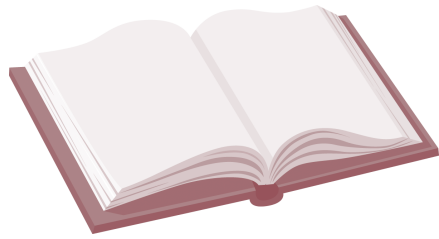
AND



# SOCIAL WORK HISTORY NETWORK



**Reviewing the past  
to prepare for the future**



### The Social Work History Network

is an informal group of social workers (many retired), historians, archivists, researchers and teachers in higher education, social work policy makers and practitioners.

Believing that a sense of the past is an essential part of identity the SWHN endeavours to promote knowledge and understanding of the nature and growth of social work to assist with the development of policy and practice.

Its prime aim is to provide a forum for research into and discussion of the history of social work.

Half day seminars are organised by a core planning group, drawing on the research activities and expertise of members and invited speakers.

Since 2005 SWHN activities have been supported by the Social Care Workforce Research Unit, King's College London.

The **creation** of the network was inspired by the impact of tributes to **Kay McDougall, OBE**, at a memorial meeting held at the London School of Economics on 5 August, 1999.

Qualifying as a psychiatric social worker in 1936, Kay had a distinguished career. At LSE from 1946 to 1967, she developed the Mental Health course and broadened the scope of social work education. She was awarded a personal Readership. Active in the Association of Psychiatric Social Workers, she followed David Jones as Chairman of the Standing Conference of Organisations of Social Workers. When negotiations in Standing Conference led to seven professional associations uniting to form BASW in 1970, Kay donated to the new association *Case Conference* the monthly social work journal, which she had founded, edited and published.



Kay McDougall signing BASW's Memorandum of Association in 1970 with (l-r) David Jones, Principal, National Institute for Social Work Training; Margaret Dobie, General Secretary, APSW; Enid Warren, President, Institute of Medical Social Workers and Chairman elect, BASW; George Pratt, Inner London Probation Service – Hon. Treasurer-elect, BASW.

The **Inaugural Meeting** called by Joan Baraclough, Keith Bilton and David N Jones, was held on **14 October, 2000** at the Charities Centre, London. Thirty people attended.

Rachel Pierce, formerly Assistant Director, Central Council for Education and Training in Social Work, spoke on the question 'What does history tell us about who should control social work education?'. Christine Woodland, Archivist, The Modern Records Centre, University of Warwick, spoke on the topic 'Preserving the History'. The Modern Records Centre is the home of the archives of BASW and its predecessor organisations.

From that beginning two, and later three, meetings have been held each year in locations such as the British Library and Friends Meeting House, London, the Museum of Social Work, Glasgow, Edinburgh University and King's College London.

### Themes have included:

- early origins of social work and friendly visiting;
- oral history;
- historical perspectives on child care and adoption;
- institutional care of old people;
- history of the NHS and web-related research;
- international social work;
- social work biographies;
- evaluation and inspection.