

Sustainability Projects Fund: Guide 2025–26



Background

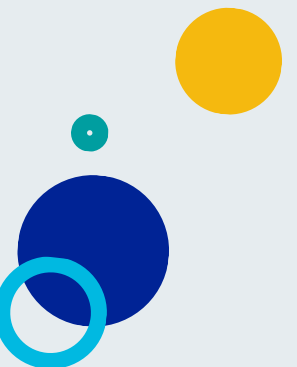
- The Sustainability Projects Fund (SPF) is a prize fund to support staff or student-led projects to enhance sustainability on campus
- Funded by a 20p 'levy' placed on single-use disposable coffee cups sold at King's College London catering outlets.
- Run jointly by King's Food and King's Climate & Sustainability teams.



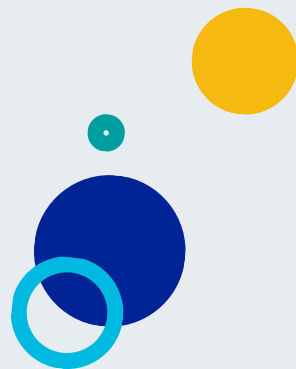
Deadlines and eligibility

Access up to £5,000 in funding for your sustainability project!

- Round 1
 - Opens 30 September 2025.
 - Deadline 24 November 2025 at 17:00.
- Round 2
 - Opens 1 January 2026.
 - Deadline 23 March 2026 at 17:00.
- After each round a judging panel will review the applications and you may be invited to pitch your project to the panel.
- Students, staff, academics, KCLSU staff, and alumni can apply if projects aim to improve King's campuses or in local communities

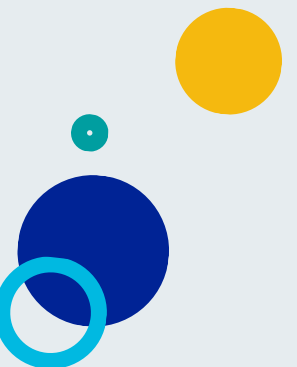


Apply for the **Sustainability** **Projects Fund**



Aims

- Contribute to the holistic advancement of environmental, social and economic sustainability at King's and beyond.
- Open to all students, staff and alumni to improve engagement of the King's community with climate & sustainability issues.
- Students and staff are invited to submit an application for one or more of the categories in the next slides but are not restricted to these categories.



Categories



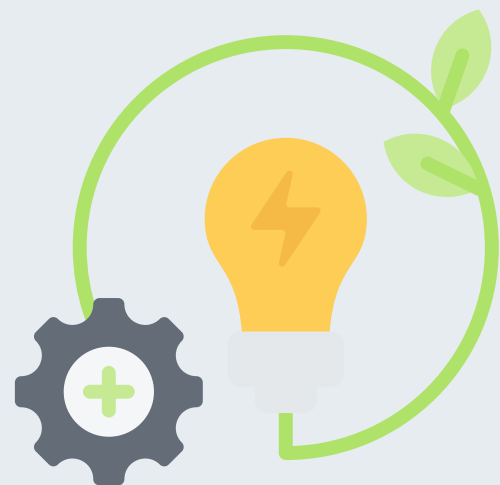
Sustainable Travel
(commuting, business,
end-of-term)



Sustainable food



**Waste reduction &
promotion of
circular economy**



**Carbon & energy
management**




Biodiversity

Categories



**Water use
reduction**



**Sustainable and
ethical procurement**



Climate Justice



**Sustainability
education and
awareness**



**Community
engagement**

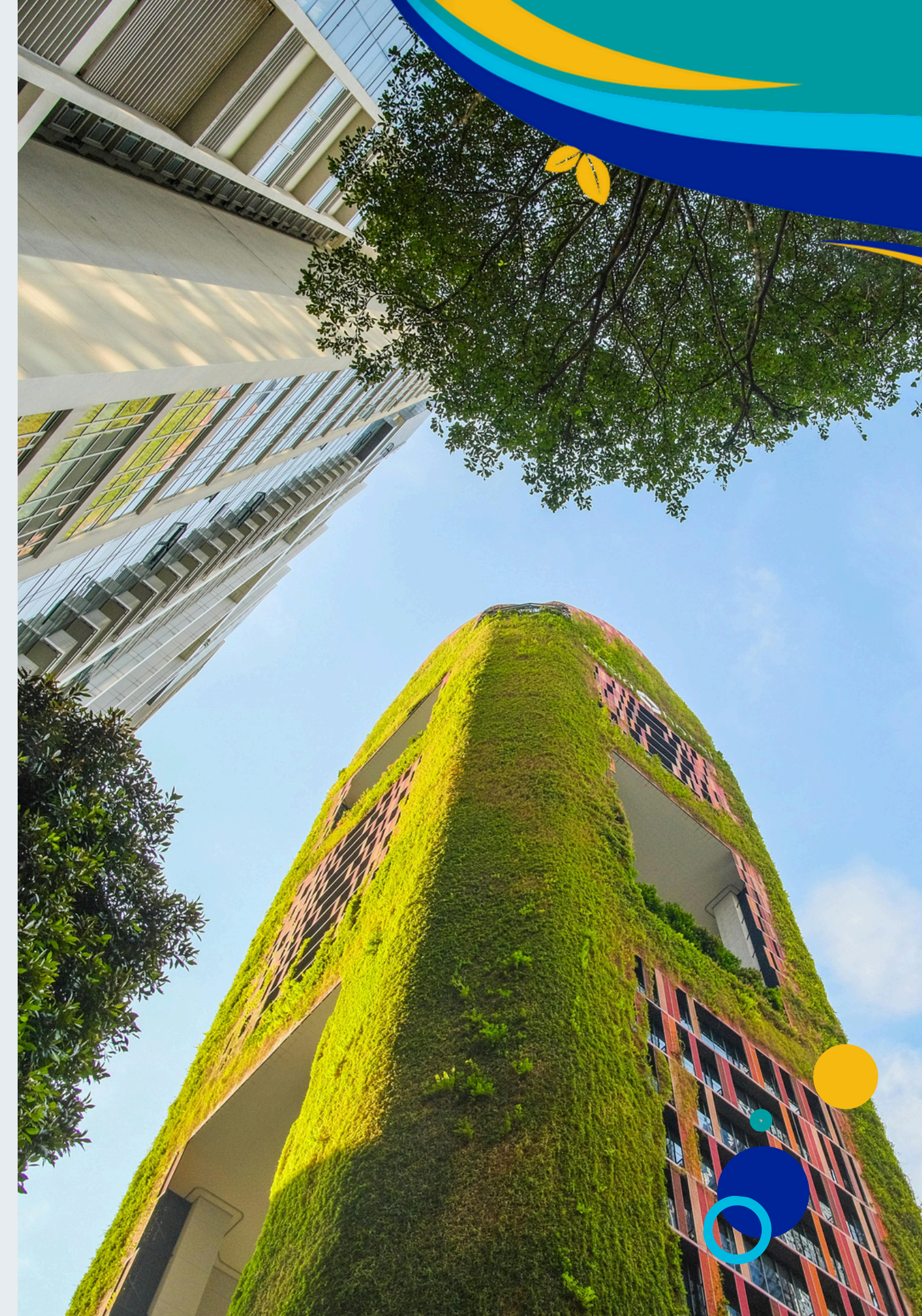


Advice for a great application

- Review the Funding exclusions to make sure the expenses you need qualify. Reach out to SPF@kcl.ac.uk if you have any doubts.
- Consult with the community. Reach out to relevant stakeholders (internal and/or external) to find out whether others are already doing something similar, to explore opportunities for collaborations and to assess feasibility of the project.
- If you struggle to find the contact details of relevant King's departments, please email SPF@kcl.ac.uk for support.

Avoid pitfalls in funding exclusions

- Don't request money for things on the exclusion list: personal compensation, alcohol, air travel, general operating costs, retrospective costs, one-off events without long-term impact.
- Show long-term value: if it's a one-off event (e.g. a workshop), demonstrate how it kickstarts an ongoing initiative.
- Use precise costs and don't round numbers: e.g. "£500 for food" without explanation risks rejection.



How to impress the judging panel

- Anticipate their expertise: the panel includes sustainability staff, King's Food, Estates, KCLSU reps, and academics. Show you've consulted stakeholders in advance (e.g. spoke with Estates or King's Food if relevant).
- Make feasibility crystal clear: link your idea to existing campus infrastructure (spaces, systems, or teams already in place) or projects in your local community
- Be pitch-ready: shortlisted applicants must present; build a clear narrative (problem → solution → impact) that can be explained in 2–3 minutes.



Monitoring & reporting strategy

- Build in progress milestones (termly updates, workshops, photos of activities).
- Consider what you aim to include in the final report/visual output (infographic, video, etc.)
- Consider how you'll collect evidence of impact (attendance numbers, survey results, carbon saved, waste reduced).



Reimbursement best practices

- Assign clear primary and secondary applicants who can pay upfront and claim back.
- Mention in your application that you've planned for receipts, filing deadlines, and budget flexibility. This shows administrative readiness, which panels appreciate.



Tips for a standout application

- Do some stakeholder engagement: “We consulted King’s Food about feasibility” → shows you’ve done due diligence.
- Include King’s sustainability data where relevant (carbon, waste stats). You can find this information on [King’s sustainability reports](#).
- Address risks: note potential downsides (e.g. waste from giveaways) and explain how you’ll mitigate them.
- Prove longevity: describe how the project continues after SPF funding ends (integration into existing programmes, handover).
- Consider both the social and environmental impacts of your project!

Golden formula for your application

Problem (sustainability gap at King's or local community)

Proposed solution (your project)

Clear measurable outcomes (environmental/social impact)

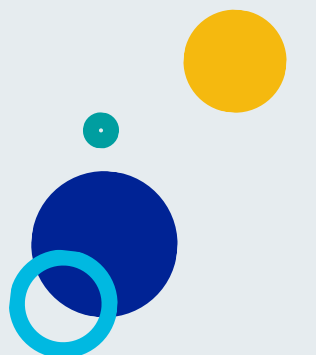
Stakeholder support (feasibility)

Long-term sustainability (legacy + scaling up).



Other logistics

- Review ‘funding exclusions’ and ‘evaluation criteria and tips’ to ensure you can justify your project in all areas.
- Carefully review the examples of successful past submissions (can be found [on the website](#)).
- Submit your application on [MS Forms](#)



Examples & past applications

[Find out more
information on
past successful
applications](#)

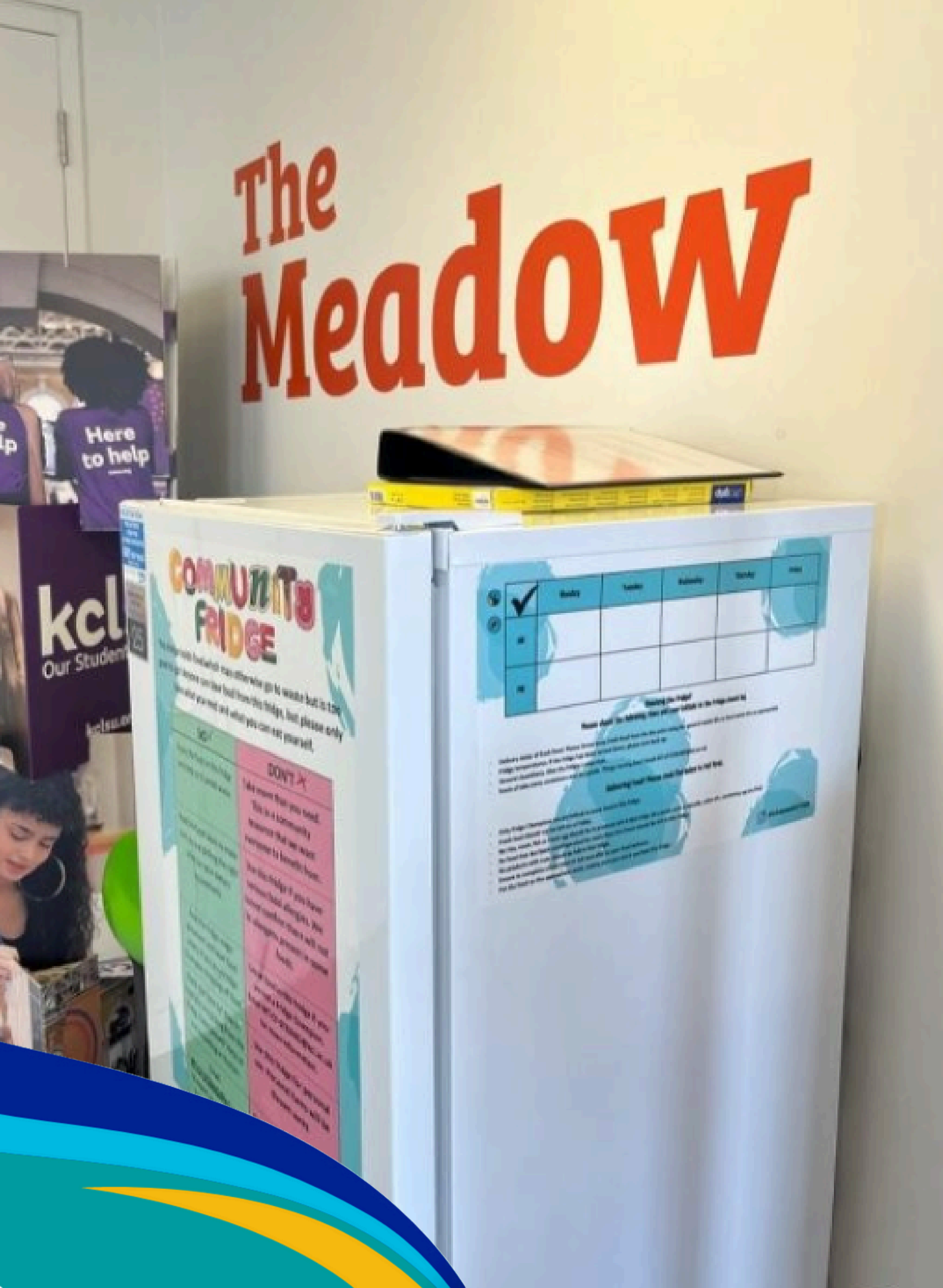
King's Climate & Sustainability
King's Food



Sustainability Projects Fund

Past successful applications






Case study – Community Fridge

- A community fridge in Bush House South East Wing for students.
- Food is sourced from Student Experience events where wastage would otherwise occur.
- Acts as a community resource, responding to the cost-of-living crisis and huge amount of food wastage on campus.



Case study – Slow travel

- Addresses the current financial barriers associated with train travel from London to various destinations across Europe for conference attendance.
- This initiative aims to support individuals by providing funding to make train travel more feasible and sustainable





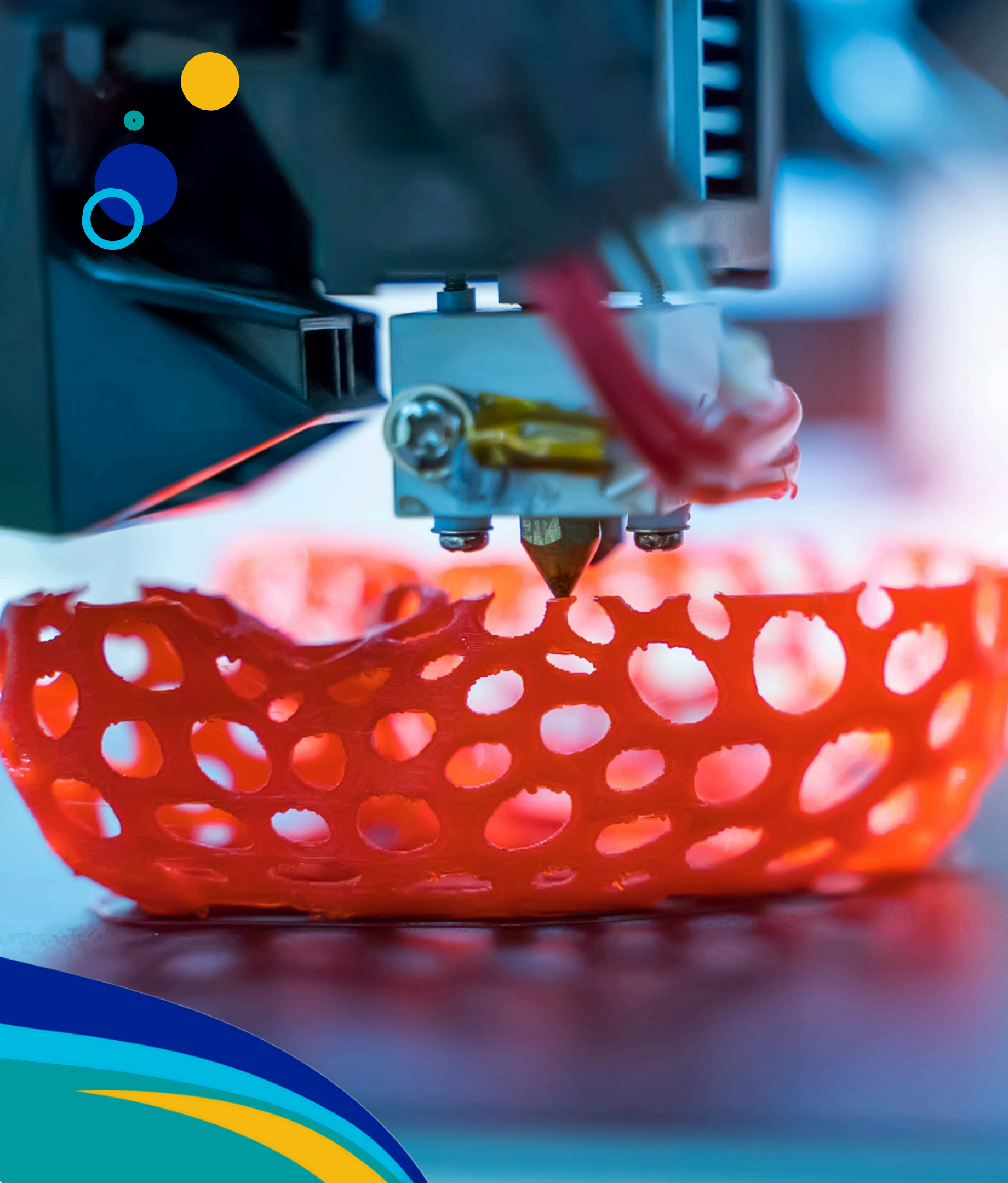
Case study – King's Language Book Swap

- A student-led swap stall giving foreign language books a second life.
 - 22 books donated in the first run, connecting learners and speakers across King's, while reducing waste and building accessibility networks .
- 
- 

Case study – Green Gambit Games

- An interactive, gamified workshop simulating real climate crises.
- Students role-played as governments, CEOs, and activists to tackle energy shortages, waste breakdowns, and species extinction. These project turned sustainability education into active collaboration and critical thinking!





Case study – Plant-Based Plastics & 3D Printing

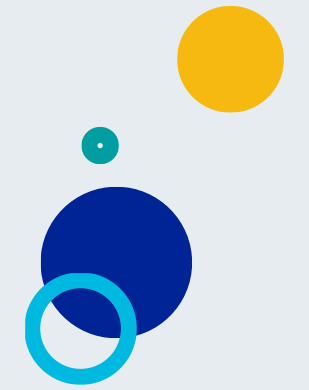
- A project tackling plastic waste from 3D printing by recycling bioplastics into new filament.
- Already diverted 20kg of waste and have the potential to recycle 200kg+ annually across departments, while positioning King's as a leader in sustainable tech and circular innovation.

Example project ideas – Behaviour change campaign (e.g. on energy, food, waste, travel)

This could consist of:

1. Communications;
2. Distribution of educational material; and
3. Monitoring

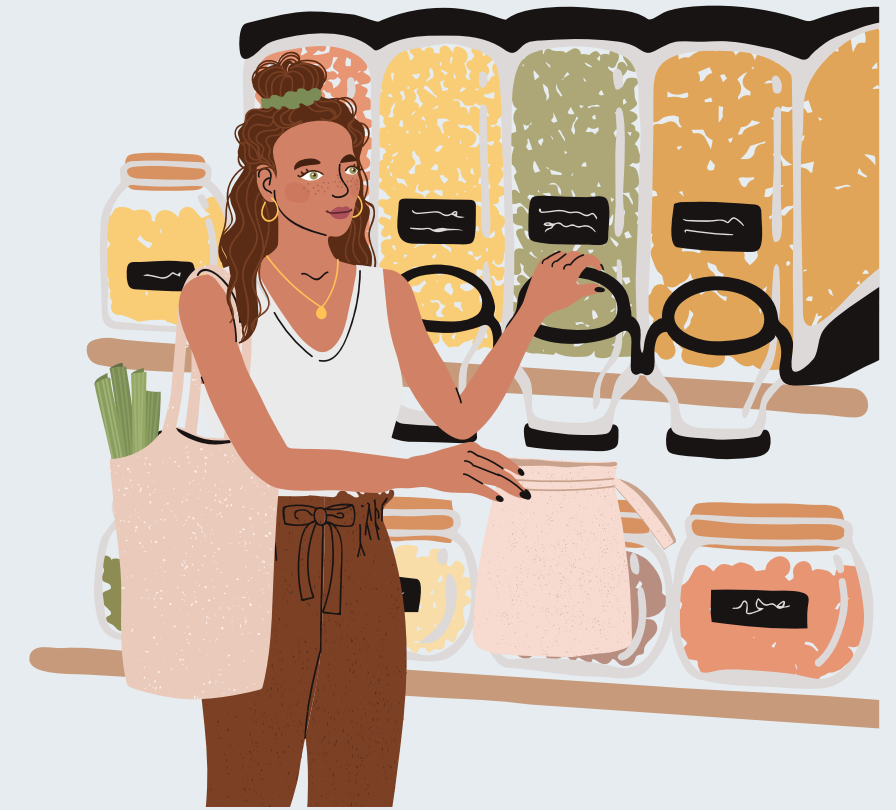
Funding needs - Communication and educational materials, workshops, events



Zero waste shop/pop-up on campus

Encourage the use of packaging-free shopping

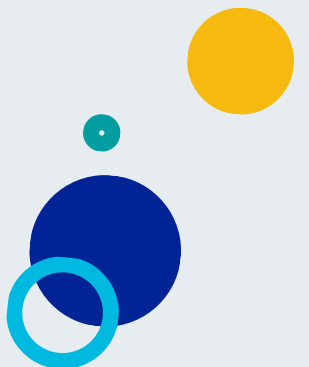
Funding needs - Venue, materials, purchases, stock



Interactive travel map

Develop an interactive travel map that shows low-carbon routes to frequent destinations from King's

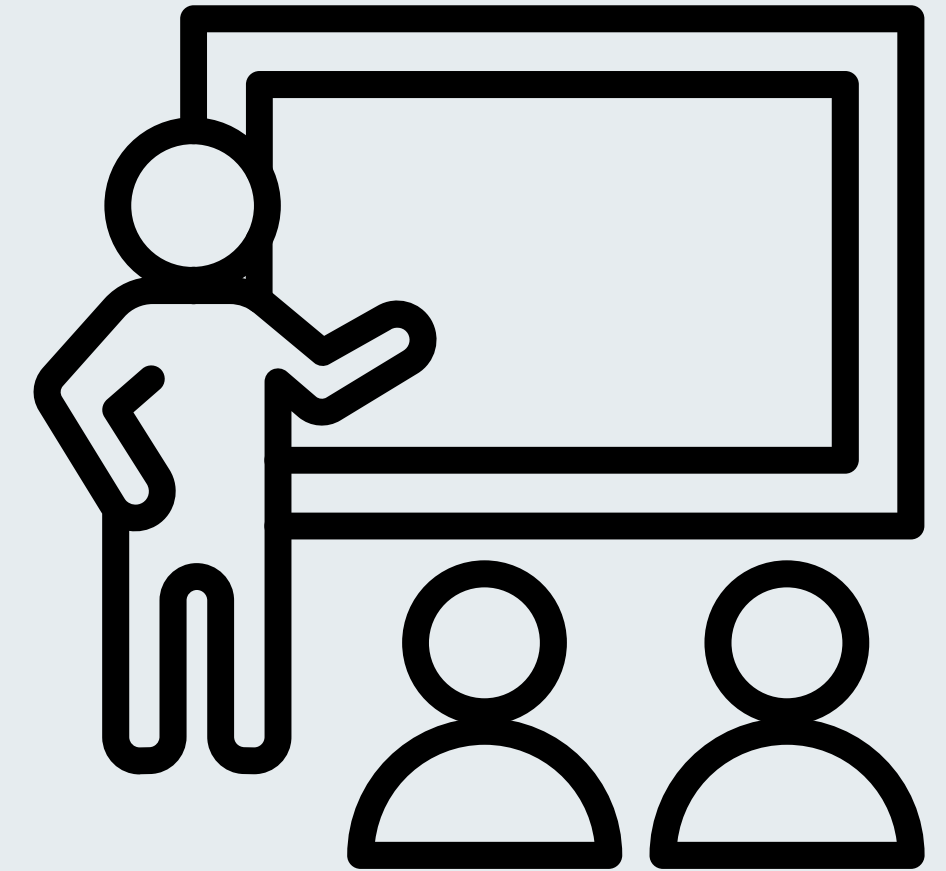
Funding needs - Research assistant, tool, IT support



Repair and upcycling projects

This could include mending workshops, repair cafes and more

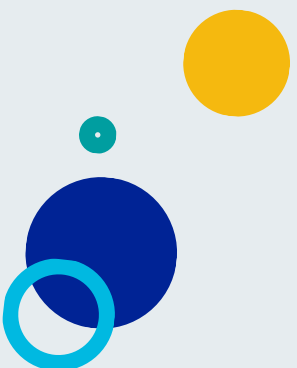
Funding needs - Workshops, materials



Tackling food/energy/waste in residences

This could include competitions, educational components, end-of-term donations/swap shops, etc.

Funding needs - Competition prize, educational materials, materials / charity to support donations, representative in each hall of residence



Indoor greening / increasing biodiversity



Roll out indoor plants across campuses / in your office

Please connect with the relevant teams / campus managers to assess feasibility.

Funding needs - Plants, gardening materials, seeds, compost, planters, pots

Arts exhibition on climate and sustainability

Develop an exhibition on campus focused around climate and sustainability topics

Funding needs - Artist collab, production, printing/ materials, venue



Slow travel fund

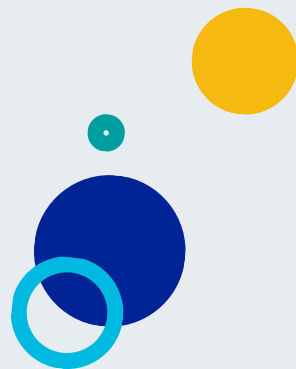
Set up a slow travel fund in your department / group to support low-carbon travel

This could function as a pilot for wider roll-out across the university.

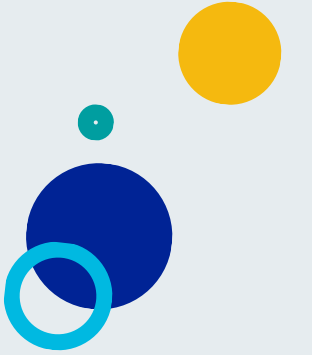
Funding needs - Communication and educational materials, workshops, events



Apply for the **Sustainability** **Projects Fund**



Relevant links



[Past successful applications](#)

[Guidance for 2025-26](#)

[Webpage with more information](#)

