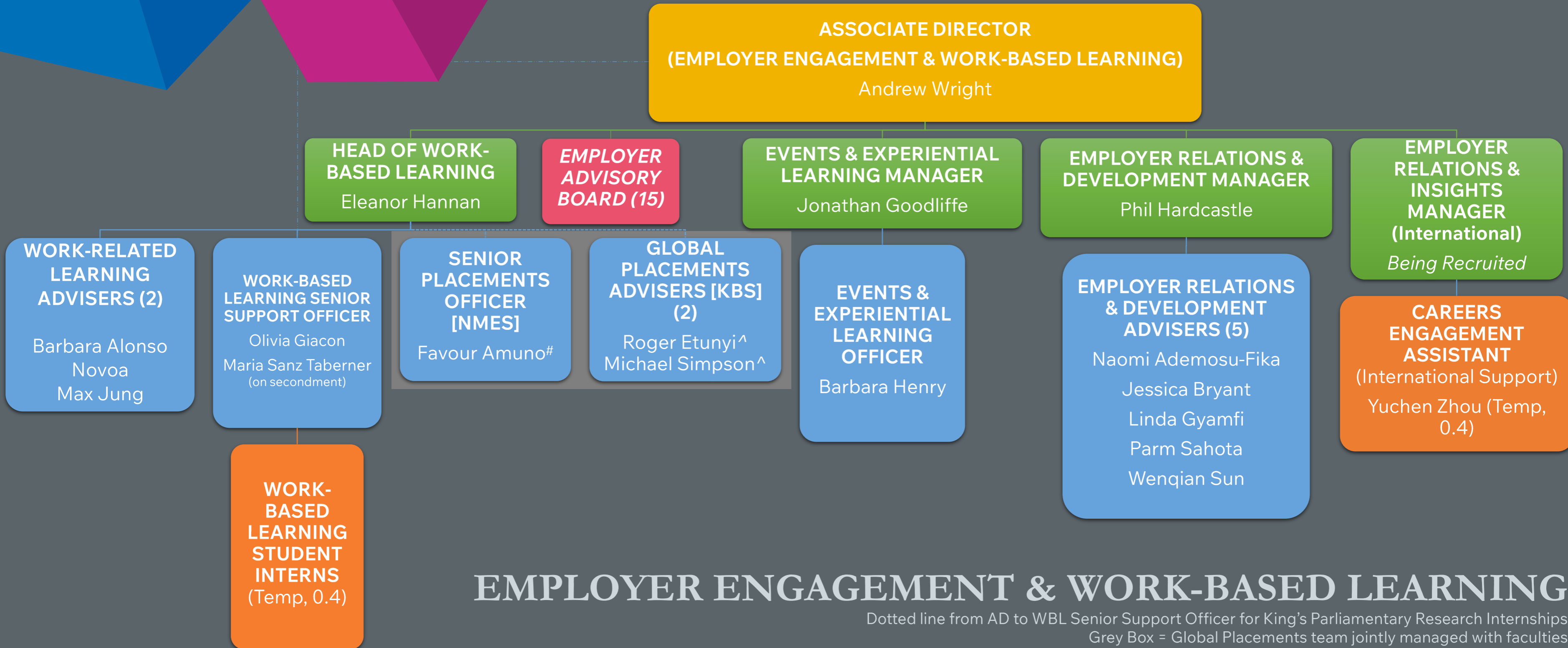


# KING'S CAREERS & EMPLOYABILITY



## EMPLOYER ENGAGEMENT & WORK-BASED LEARNING

Dotted line from AD to WBL Senior Support Officer for King's Parliamentary Research Internships

Grey Box = Global Placements team jointly managed with faculties

^ Jointly with King's Business School

# Jointly with Faculty of Natural, Mathematical & Engineering Sciences