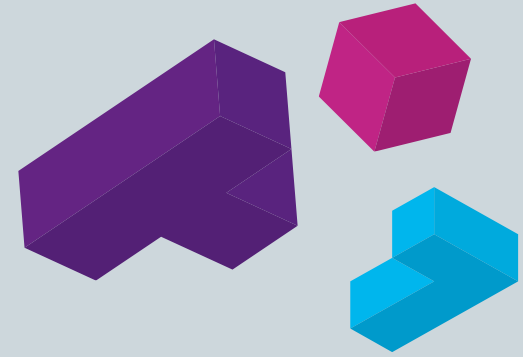


Employer Quick Guide to **Global Placements**

2025–26





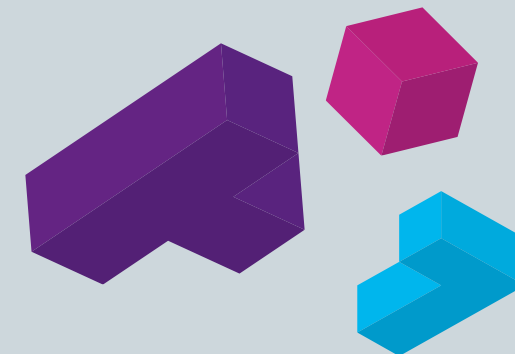
SHOULD I HOST A KING'S INDUSTRY PLACEMENT?

What is a Global Placement?

- Full-time work placement of 9-12 months in length.
- A domestic opportunity with a focus on global business **OR** an international opportunity
- Paid at least national minimum wage* of country in which opportunity is based.
- Meaningful work experience which enables a student to put their academic studies into practice whilst acquiring broader knowledge, attributes and skills which will develop their employability learning.
- Recruiting a student who has completed two+ years of an undergraduate (BSc/MSci) degree from a leading global university.

How could it benefit your organisation?

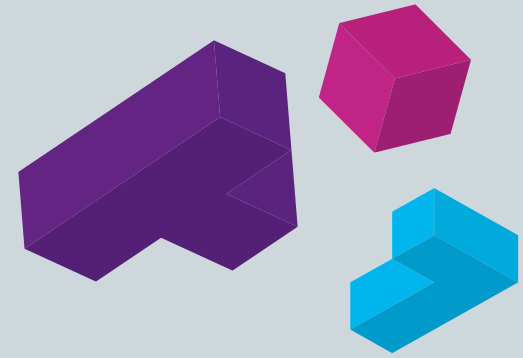
- Explore new talent with fresh ideas and up-to-date learning.
- Strengthen your graduate recruitment pipeline with diverse talent.
- Enhance your brand awareness within our diverse student body.
- Connect and deliver impactful work with a top international university.
- Benefit from full lifecycle support from our dedicated from our Global Placements team.
- Upskill your existing staff, providing project management, supervision and line management opportunities.



SHOULD I HOST A KING'S INDUSTRY PLACEMENT?

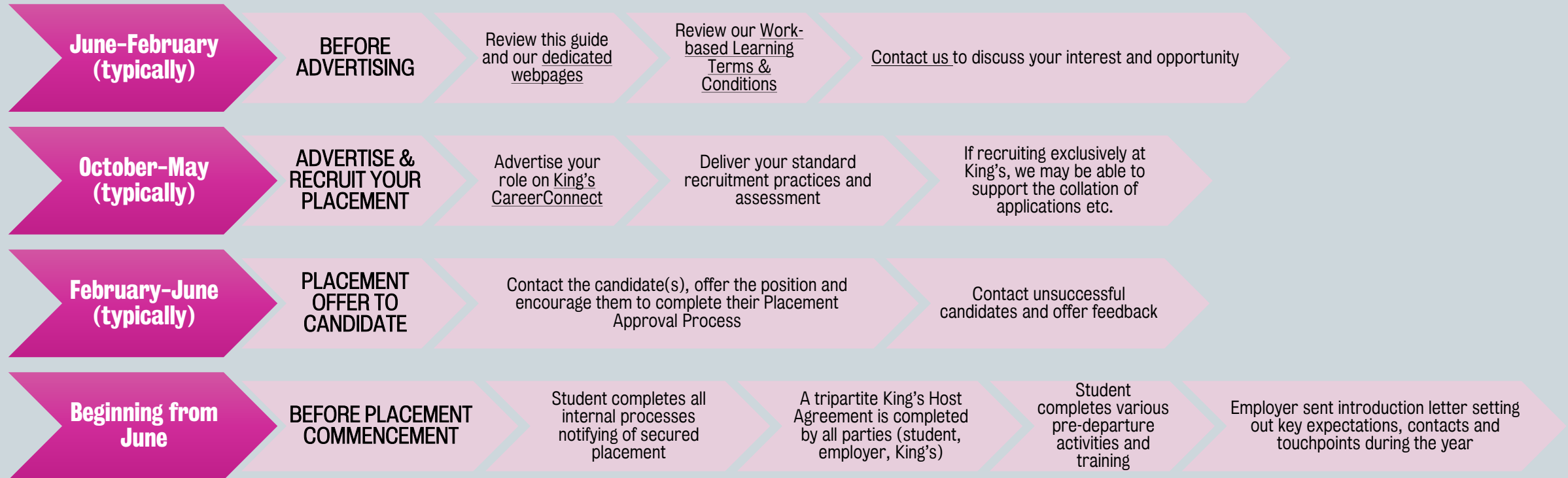
Which degree programmes does King's offer a placement to students?

Discipline Cluster	Programmes
Accounting & Finance	<u>Accounting & Finance with a Year in Industry BSc</u> <u>Data Analytics for Business and Finance with a Year in Industry BSc (from 2025 entry)</u>
Business	<u>International Management BSc</u> <u>Business Management with a Year in Industry BSc</u> <u>Economics & Management with a Year in Industry BSc</u>
Chemistry & Natural Sciences	<u>Chemistry with a Year in Industry BSc</u> <u>Chemistry with a Year in Industry MSci</u> <u>Chemistry with Biomedicine with a Year in Industry BSc</u> <u>Chemistry with Biomedicine with a Year in Industry MSci</u> <u>Natural Sciences with a Year in Industry BSc</u>
Informatics & Artificial Intelligence	<u>Artificial Intelligence with a Year in Industry BSc</u> <u>Computer Science with a Year in Industry BSc</u> <u>Computer Science with Management & Year in Industry BSc</u>
Mathematics	<u>Mathematics with Statistics with a Year in Industry BSc</u> <u>Mathematics with Management & Finance with a Year In Industry BSc</u> <u>Mathematics with a Year in Industry MSci</u> <u>Mathematics with a Year in Industry BSc</u>



HOW DO I HOST A KING'S PLACEMENT STUDENT?

What are the necessary steps in the process to successfully host?



KING'S CAREERS & EMPLOYABILITY

KING'S
College
LONDON

“The calibre of applicants from King’s is incredibly high and they are always a strong asset to our development team, and in turn we offer challenging and fulfilling work during the placement. we always remain in touch with our placement students, and we hope that we can bring many back into the company once they have finished their studies.”

PaperPlanes - hosted Computer Science BSc students in 2021/22, 2022/23 & 2023/24

GLOBAL PLACEMENTS
KING'S CAREERS & EMPLOYABILITY
Strand

London WC2R 2LS

kcl.ac.uk/careers | kcl.ac.uk/employers/recruit/placements
global-placements@kcl.ac.uk

    @kingscareers 

Publication date: September 2025

The information in this guide is published in good faith and was correct at time of publication. However, some changes may be necessary due to legitimate staffing, financial, regulatory and academic reasons.

© King's College London 2025