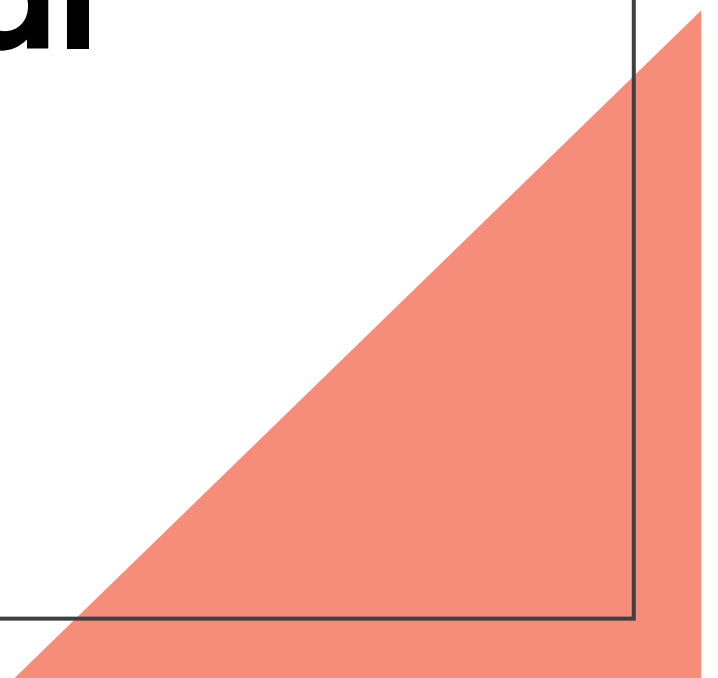


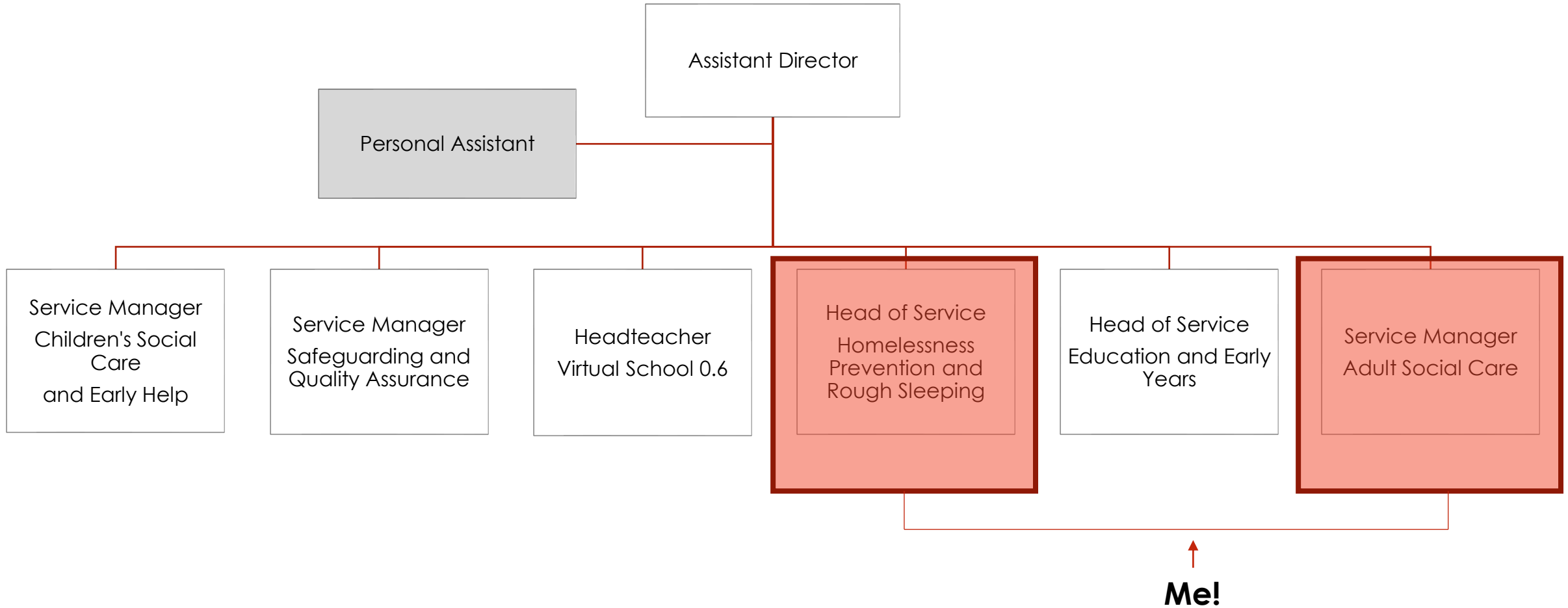
First Hand Experience of Homelessness Social Work

Maddie Tait

*Homelessness Prevention and Rough
Sleeping Social Worker – City of London*



City of London
Community and Children's Services
Peoples Directorate



Homelessness Prevention and Rough Sleeping Social Worker – model of working

**Adult
Social
Care**

Homelessness Prevention and Rough Sleeping Social Worker

- Assertive outreach
- Trauma informed care
- Flexible and creative
 - Multiagency
- Relationship based work
- Knowledge of legal systems and statute
- Care Act (2014) duties
 - Strengths based
 - Person centred
- Social Work values and ethics

**Homelessness
Prevention
and
Rough
Sleeping
Services**

Other aspects of the role ...

- Facilitating peer-led reflective sessions for frontline staff, organising cross-service reflective opportunities.
- Monthly outreach shifts over the winter
- Taking on line management for Homelessness Strengths Based Practitioner

Case examples...

- Mr J



- Mr T



Lessons learnt:

- Needs to be a drive from both adult social care and homelessness services – not one sided.
- Rome wasn't built in a day – building compassion across services.
- Requires a different model of working than in ASC, but at the same time, can't pretend to be an outreach worker!
- Hopefulness and persistence – a step back isn't a failure
- Advocacy, navigation, and knowledge of systems