

Inside this issue

- 2 Children's Services Events
- 3 Looked After Children who are Not in School
Making Research Count Resources:
Webinar Recordings (Children's Social Care)
- 4 Social Work Research Podcasts
Making Research Count Resources:
Webinar Recordings (Adult Social Care)
- 5 Adult Services Events
- 6 Other Forthcoming Events
- 8 Self-Neglect and Hoarding Among Older People
Post-Graduate Study
at the University of Bedfordshire:
MA Childhood, Youth and Family Studies

Practice Development Webinar

Tuesday 19 September 2023

11.00am - 12.30pm (Online)

Reframing Child to Parent Violence: Explosive and Controlling Impulses in Pre-Adolescent Children

Dr Nikki Rutter, Durham University



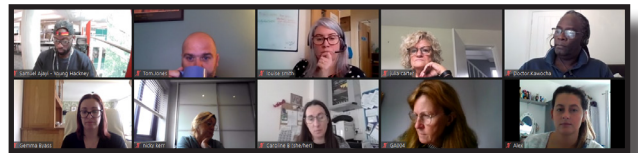
Interest in child to parent violence is rising in research, policy and practice. Social work and social workers are often the first line of support, despite child to parent violence rarely fitting child or adult safeguarding thresholds or approaches.

In this webinar, Dr Nikki Rutter will share her research exploring a form of non-intentional child to parent violence, referred to as 'explosive and harmful impulses' through the perspectives of parents and pre-adolescent children living with, or instigating, this form of harm. She will highlight practices and tools that families found helpful when navigating child to parent violence.

For further information, please click [here](#)

Managing and Leading Your Team in a Period of Hybrid Working: A Course for Managers in Children's and Adult Services

The last 3 years have seen working practice in social work change significantly. At the height of the pandemic, most of the workforce was working largely remotely. This placed particular demands on managers attempting to lead teams, ensure high quality services for those who use them alongside ensuring the well being of staff. It is clear that we will not be going 'back to normal'.



While staff are carrying out more face to face meetings, and visiting their offices less, we are seeing new models of hybrid working emerge. This webinar series will explore the implications for management and supervision. It will look at the growing body of research on remote working and think about its implications for social work across the different aspect of supervision. Each session is a stand alone event but, together, they constitute a course that will seek to cover many aspects of learning, and managing teams.

1. **What is Good Practice in Supervision
When it is Being Carried Out in a Hybrid
Environment?**
Thursday 7 September 2023, 9.30 – 11.00am
2. **Developing Supervisees' Capacity for
Reflection, Analytical Thinking
and Decision-Making Skills**
Friday 22 September 2023, 9.30 – 11.00am
3. **Managing and Promoting Good Practice:
A Strength-Based Approach
to Managing Performance**
Thursday 5 October 2023, 9.30 – 11.00am
4. **Building Staff Wellbeing
and Professional Resilience**
Friday 3 November 2023, 9.30 – 11.00am
5. **Promoting Use of Self,
Relationship-Based Practice,
and the Ethical Use of Authority
in the Supervisory Relationship**
Wednesday 15 November 2023, 1.30 – 3.00pm

To book places, please contact: mrc@kcl.ac.uk

Practice Development Events

For those working in, and with, children's services

Tuesday 12 September 2023, 1.30 – 3.00pm
[Child Protection Chairs Forum](#)

Tuesday 19 September 2023, 11.00am - 12.30pm
[Reframing Child to Parent Violence: Explosive and Controlling Impulses in Pre-Adolescent Children](#)
Dr Nikki Rutter, Durham University

Wednesday 27 September 2023, 11am - 12.30pm
[Constructing, and Reconstructing, Childhood in Care](#)
Dr Stephen Mills,
Tavistock and Portman NHS Foundation Trust

Wednesday 27 September 2023, 1.30 – 3.00pm
[Implementing the Review of Children's Social Care: The Evolving Role of Social Work in Children's Services](#)

Thursday 28 September 2023, 9.30 – 11.00am
[Responding to Concerns About Domestic Violence and Abuse](#)

Thursday 5 October 2023, 11.30am – 1.00pm
[Assessing and Responding to Neglect](#)

Wednesday 11 October 2023, 11.00am - 12.30pm
[Working with Domestic Violence and Abuse: Managing Professionals' Vicarious Trauma](#)
Simon Kerss
Anglia Ruskin University

Friday 13 October 2023, 9.30 – 11.00am
[Care Leavers: The Meaning of Corporate Parenting Beyond the Age of 18?](#)

[Critical and Reflective Practice Forum: A 'Book Group' for Children's Social Care Managers and Experienced Practitioners](#)

- Meets: Last Friday of Every Month
- Time: 10.00 - 11.00am
- Held Online

The MRC Critical and Reflective Practice group, at King's College London, is a well-established forum that provides an opportunity to:

- Identify and discuss key areas of emerging social work research
- Explore the implications of major policy documents for practice
- Debate and discuss key areas in contemporary social work with colleagues from across London

The Forum has run for more than 15 years and brings together practitioners and managers from across the UK. This unique forum works as a 'book group', looking at articles, research papers and policy documents, which are circulated beforehand to members, and considers their implications for practice.

Topics are selected by the group, but have included: contextual safeguarding; supervision and the meaning of professional leadership; anti-oppressive practice; professional resilience; the nature of reflective practice; the impact of austerity and poverty; the efficacy of the safeguarding and care systems; and implications for social work of new ways of working.

The next meetings of the Forum are:
Friday 29 September 2023, 10.00 - 11.00am
Friday 27 October 2023, 10.00 - 11.00am

To book places, and for further information, please email Janet Noble at janet.noble@kcl.ac.uk.

Friday 13 October 2023, 11.30am – 1.00pm
[Intrafamilial Sexual Abuse](#)

A series of three webinars:

[Care Leavers, Covid and the Transition from Care](#)
Tuesday 24 October 2023, 11.00am – 12.30pm
Tuesday 7 November 2023, 11.00am – 12.30pm
Thursday 30 November 2023, 11.00am – 12.30pm

Friday 3 November 2023, 11.30am – 1.00pm
[Emotional Abuse](#)

Wednesday 8 November 2023, 3.30 – 5.00pm
[Pre-Birth Assessments: Effectively Addressing the Practice and Ethical Challenges](#)

Tuesday 14 November 2023, 11.00am - 12.30pm
[Understanding the Needs of Children Living with Parental Substance Misuse](#)

Dr Hannah Todman, Stockport Council

Making Research Count at the Universities of Bedfordshire and King's College London

For further details of these, and other, events visit:

www.beds.ac.uk/mrc
www.kcl.ac.uk/hscwru/research/mrc

Looked After Children Who Are Not in School

Report (May 2023) from the Children's Commissioner

While some nationally available information is collected on children who are missing education, only aggregate numbers are collected, which makes it hard to understand the characteristics and journeys of the individuals. The Children's Commissioner therefore requested data from every local authority on the education status of all their children in care, so the data in this report is the first to present childlevel data on the education status of looked after children who are not in school.



The office found that, using the Children's Commissioner's office (CCo) definition of children not in school, in March 2022, 1,363 looked after children (2.7%) were missing from school. It is of course welcome that the vast majority of looked after children are therefore in school. But it

is concerning, given the clear duties on services to ensure these children can access the best schools, that too many are still missing out altogether and within the wider school-age population, the Department for Education has no way of identifying who these children are, leaving the number who go without an education nationally unknown.

Further analysis shows that certain groups of children, some with particular vulnerabilities, and some factors relating to a child's education and care placements, made them more likely to be missing from school.

- Unaccompanied Children Seeking Asylum (UCSA);
- Children with Education, Health and Care Plans (EHCPs), and children with Social and Emotional
- Mental Health needs or Autistic Spectrum Disorder;
- Older children;
- Boys; and,
- The 'Other' ethnic group had the highest rate of children not in school, but when taking account of UCSA in the analysis, the Black ethnic group becomes the ethnic group with the largest proportion of children not in school.

This report makes several recommendations for government, schools and local authorities to ensure that every child identified as vulnerable is attending a good or outstanding school every day.

To access the report, please click [here](#).

Resources

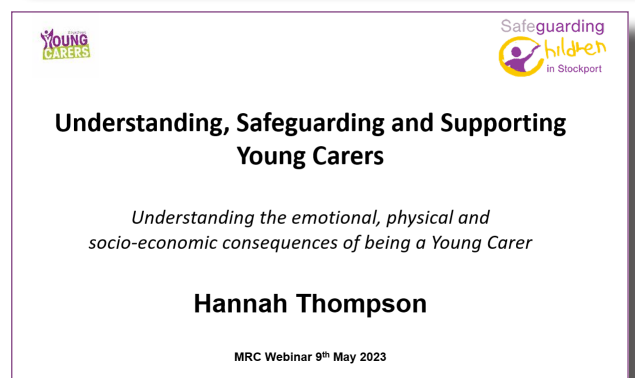
Video recordings of Making Research Count (MRC) webinars

The full library of recordings is available to subscribing MRC members, but the following selection is free to access (please click on the image to view the video):



Understanding what makes life good for children in care and care leavers: Improving well-being

Dr. Claire Baker
Linda Briheim-Crookall



Martin Webber's blog

MUSINGS OF A SOCIAL WORK ACADEMIC

Social Work Research Podcast



In these podcasts, Prof Martin Webber talks to social work researchers about studies they have conducted. Each episode is a detailed conversation about one piece of research. They explore its background, methods, findings and implications for social work practice.

The aim of the podcast is to help make research more accessible to social work students and practitioners. It both contributes to students' learning about social work research and provides a source of continuing professional development for new and more experienced practitioners.

In each podcast episode, conversations:

- explore the practice context for each study
- explain research terminology and methodology
- expand on ideas often presented very succinctly in research papers
- explore the relevance of the findings for social work practice

The podcast provides listeners with the opportunity to hear about research from researchers themselves and to find out a little more about them. It provides researchers with an opportunity to share their research findings with a wider audience and to highlight important features about it. A link to the full text of the research paper under discussion in each episode is provided for those wishing to extend their learning.

Results to practice – Christa Fouche
Strengths-based approaches – James Caiels
Social work professional identity – Bernadette Moorhead
Contextual safeguarding – Carlene Firmin
Discretion in child protection social work – Ciarán Murphy
Violence during adolescence and mental health – Helen Fisher
Mental health of young carers – Ludmila Fleitas-Alfonzo and Tania King
Relationship-based practice – Liz Beddoe and Lisa Warwick
Teaching and learning communication skills – Emma Reith-Hall and Paul Montgomery
Physical activity for disabled people – Brett Smith
Social workers' experiences of bureaucracy – Katheryn Margaret Pascoe
Timebanking in adult social care – Ruth Naughton-Doe
Preventing child sexual abuse – Mengyao Lu
Migration of social workers – Yohai Hakak
Small talk in social work – Clara Iversen
Supporting older carers – Stacey Rand
Parents' views of social workers – Mary Baginsky
Overcoming barriers to engagement – Louise Newbould
Kinship care – Paul Shuttleworth
Breaking bad news – Marte Tønning Otterlei
Digital learning – Amanda Taylor-Beswick
Mindfulness for social workers – Alan Maddock
Communicating with children and families – Gillian Ruch
Reducing child protection interventions – Ella Kuskoff
Adoption and ethics – Brid Featherstone
Arts, nature and health – Helen Chatterjee
Social work parenting interventions – Jitka Vseteckova, Sally Boyle and Martyn Higgins
Social media snooping – Arnold Thornton-Rice
Social work in times of conflict – Vasilios Ioakimidis
LGBT+ older people in lockdown – Trish Hafford-Letchfield
Intimate partner violence against men – Elizabeth Bates

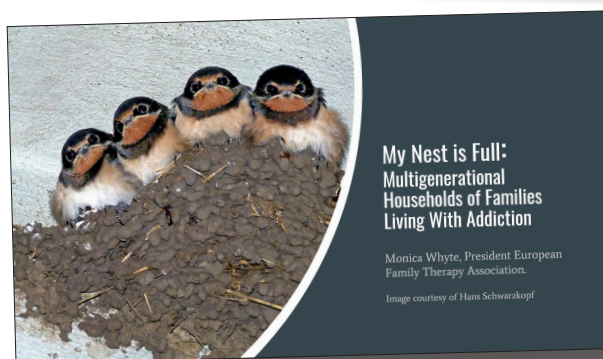
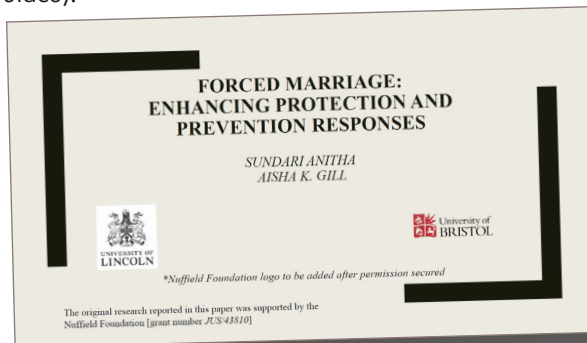
To access Martin Webber's resources, please click [here](#).



Resources

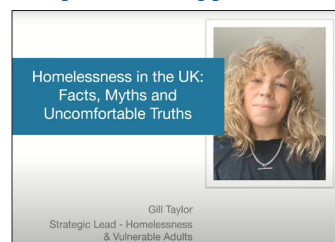
Video recordings of Making Research Count (MRC) webinars

The full library of recordings is available to subscribing MRC members, but the following selection is free to access (please click on the image, or link, to view the video):



Webinar series: Homelessness

- [Homelessness in the UK: Facts, Myths and Uncomfortable Truths](#)
- [Commissioning for the Holistic Needs of People Affected by Homelessness](#)
- [Trauma-Informed Practice in Rough Sleeping Services](#)
- [Homelessness, Safeguarding and the Care Act](#)
- [Homelessness Law, Policy and Strategy](#)
- [Co-Production with People with Lived Experience of Homelessness](#)
- [Dying Homeless: Preventing the Premature Deaths of Homeless People](#)



Practice Development Events

For those working in, and with, adult's services

Adult Services CPD Programme

A Critical and Reflective Practice Forum for Managers and Experienced Practitioners in Adult Services

Meets: Last Friday of Every Month
Time: 11.00am - 12.00pm, online

Making Research Count (MRC) is a university based research dissemination network that seeks to build the links between research, policy and practice. The MRC Adult Services CPD Programme, King's College London, is a well-established group that provides an opportunity to:

- Identify and discuss key areas of emerging social work research
- Explore the implications of major policy documents for practice
- Debate and discuss key areas in contemporary social work with colleagues from across London.

The Group brings together practitioners and managers from across the UK. It looks at articles, research papers and policy documents, which are circulated beforehand to members, and considers their implications for practice. Topics are selected by the Group, but have included: end of life care for people with dementia; implications of the 2014 Care Act; and the reablement of people with mental health difficulties.

Signing up to the Group does not commit participants to attending every session. Indeed, several people only attend occasionally - but appreciate getting the papers.

The next meetings of this Forum will be:

Friday 29 September 2023, 11am - 12pm
Friday 27 October 2023, 11am - 12pm
Friday 24 November 2023, 11am - 12pm

To join the Forum, please email mrc@kcl.ac.uk

Thursday 28 September 2023
11.00am - 12.00pm

What's New in Direct Payments?
Prof Jill Manthorpe, King's College London

Wednesday 11 October 2023
11.00am - 12.30pm
Working with Domestic Violence and Abuse: Managing Professionals' Vicarious Trauma
Simon Kerss, Anglia Ruskin University

Thursday 16 November 2023
11.00am - 12.00pm
End of Life Care: Implications for Community Based Services
Prof Jill Manthorpe, King's College London

To book your place, please click on the above links

Homelessness

Three new webinars, organised by the Health & Social Care Workforce Research Unit, King's College London

Wednesday 20 September 2023,
10.00 - 11.30am

Addressing Multiple Exclusion Homelessness in Social Work Education

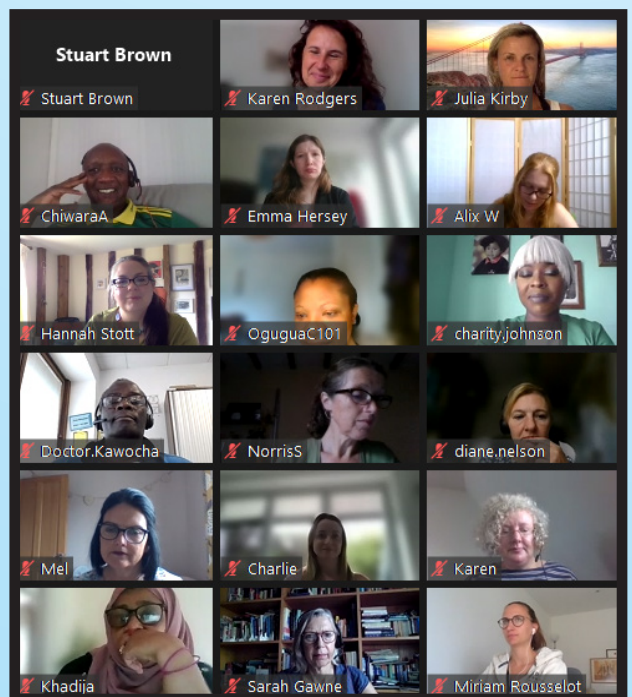
Tuesday 17 October 2023,
10.00 - 11.00am

Changing the System for People Experiencing Severe and Multiple Disadvantage

Thursday 16 November 2023,
10.00 - 11.00am

Launch: Multiple Exclusion Homelessness: A Safeguarding Toolkit for Practitioners

To book your place (via eventbrite), please click on the above links



Many further MRC events for those working in, and with, adult services are 'in the pipeline' Details will be published in early September at: www.beds.ac.uk/mrc

Conferences

Safeguarding Children:

Delivering a More Effective and Robust System

28 September 2023

Manchester Conference Centre, M1 3BB

In February 2023 the Government released its new strategy for children's social care with the view to improve the lives of children by focusing on love within a safe, stable and reliable setting. The paper, *Stable Homes, Built on Love*, highlights the need for improved front line protection, in part enacted through better multi-agency partnership working and information sharing.

At this Open Forum Events conference, the 6th Safeguarding Children: Delivering a More Effective and Robust System, delegates will be updated on the latest developments and initiatives to strengthen safeguarding through a series of insightful and informative presentations delivered by expert speakers. Throughout the day there will be the ample opportunity for sharing best practice, interactive discussion, and informal networking to complete the full conference experience.

As new risks and threats constantly emerge, delegates will be updated on the latest developments and initiatives to strengthen safeguarding through a series of insightful and informative presentations delivered by expert speakers. Throughout the day there will be the ample opportunity for sharing best practice, interactive discussion, and informal networking to complete the full conference experience.

For further information, click [here](#)

Social Work Scotland Conference 2023

4 October 2023, Strathclyde University, Glasgow

For details of this event, including speakers and programme, click [here](#)

Children and Young People's Mental Health: Improving Access to Effective Support

5 October 2023

Royal National Hotel, London WC1H 0DG

The 10th Children and Young People's Mental Health conference, organised by Open Forum Events, will bring together key stakeholders dedicated to improving young people's lives, for a day of learning, conversation and networking.

The Children and Young People's Mental Health: Improving Access to Effective Support conference will present a series of plenary presentations, delivered by expert speakers, to update delegates on the current situation and discuss measures to make improvements. The agenda will highlight specific issues, showcase best practice and will share lived experience.

The conference is designed to encourage interactive engagement between speakers, contributors and delegates through the question and answer sessions and discussion groups, whilst interspersed between plenary sessions there will be ample opportunity for casual networking amongst peers and fellow professionals.

Attending this conference will benefit all those

These are not Making Research Count events, but may be of interest to our members.

If you would like further information, please click on the related link.

providing CYP mental health services.

For further information, click [here](#)

Community Care Live

10-11 October 2023

Business Design Centre, London N1 0QH

Community Care Live is the UK's largest free to attend social work event. On offer is a free expert seminar programme providing essential learning and training for social work professionals, supported by an exhibition where visitors, exhibitors and speakers can meet, network and share learning with other organisations within the sector including local authorities, residential care providers, suppliers, recruiters, the voluntary sector and universities. In addition to the free seminar programme and exhibition we also offer a legal learning stream, providing the latest legal guidance and advice from some of the country's leading experts.

For further information, click [here](#)

Learning Disabilities and/or Autism: Building on the Right Support

9 November 2023

Royal National Hotel, London WC1H 0DG

This biannual meeting, now in its 9th year, will continue the dialogue to improve the lives of those living with or affected by a learning disability and/or autism.

Attendees will hear from a line-up of expert speakers who will discuss challenging topics, debate contentious issues and analyse the way forward. Interactive question and answer sessions will consolidate knowledge sharing, whilst casual networking will create connections.

Gain a true understanding of the current thinking which can be applied and positively contribute to your own circumstances, organisations and working practices to improve the lives of all those touched by learning disability and/or autism.

For further information, click [here](#)

The Adult Social Care Conference: Delivering Integrated and Person-Centred Care for All

14 November 2023 Online

The Adult Social Care sector is hugely important, affecting the lives of many people across the UK. Between 2021-2022, 818,000 people received publicly funded long-term social care and 224,000 episodes of short-term care were provided. Due to an ageing population with increasingly complex needs, the demand for adult social care is expected to rise. Practitioners are working hard to provide the support needed to enable people to live independent, safe and fulfilling lives despite illness, disability, frailty or vulnerability. Despite this, various challenges persist such as staffing shortages, long waiting times and lack of community services. Now is an opportune moment for the social care sector to come together and explore collaborative approaches to overcome difficulties in providing joined-up, person-centred care.

Join us at The Adult Social Care Conference to hear the latest policy updates and guidance from leading experts to improve adult social care provision. Engage with a series of case studies showcasing best practice in supporting service users. Topics covered will include

working in partnership to deliver coordinated care, training staff to provide culturally-appropriate care and improving workforce planning. Gain the opportunity to network with senior colleagues from across the social care sector to discuss challenges and collaboratively come up with solutions.

For further information, click [here](#)

Safeguarding Adults: Making it Personal

23 November 2023

Manchester Conference Centre, M1 3BB

Safeguarding adults means 'protecting a person's right to live in safety, free from abuse and neglect'. There were an estimated 541,535 concerns of abuse raised during 2021-22, an increase of 9% on the previous year, which is slightly above the average annual growth rate per year for the previous four years (8% per year on average between 2016-17 and 2020-21).

Book or hold your places today at Open Forum Events' conference, National Safeguarding Adults: Making it Personal, for the opportunity to discover how to improve safeguarding practice to prevent harm and reduce the risk of abuse and neglect.

Don't miss the chance to learn from expert speakers and experienced practitioners with invaluable knowledge and discover the very latest initiatives being applied to support adults at risk.

This annual meeting will bring together all those with responsibilities to safeguard adults whose personal circumstances could deem them as vulnerable and at risk of harm. Although there are specialists working in safeguarding, it is the responsibility of everyone to recognise and report any safeguarding suspicions.

This well attended event will provide delegates with enhanced learning to support their safeguarding practice. Question-and-answer sessions will allow for delegates to have their say and contribute to the discussions, whilst informal networking breaks will allow for knowledge exchange and peer interaction.

For further information, click [here](#)

13th European Conference for Social Work Research: Envisioning Future: Social Work Research and Discourse in the Age of Industry 4.0

17-19 April 2024, Vilnius, Lithuania

The Local Organising Committee is pleased to invite scholars from all over Europe and beyond to attend the 13th European Conference for Social Work Research.

The conference will focus on social work research that looks more closely at how technological innovations and communication through technologies are changing and shaping social work interactions, relationships, interventions and practices.

It is a great opportunity to share your research as well as to network and collaborate with peers and colleagues from social work research community. Also, get to know Vilnius – the capital of Lithuania, celebrating its 700th birthday in 2023.

Important dates:

- Call for Papers: 12 June 2023
- Registration opens: 2 October 2023
- Abstract submission deadline: 1 October 2023

For further information, click [here](#)

Postgraduate Study at the University of Bedfordshire

School of Applied Social Sciences

Introducing the MA Childhood, Youth and Family Studies with two pathway options

The University of Bedfordshire recently developed a new MA aimed at students working with children, young people and/or families in any setting. There are two pathways which are explained below. However, both courses cover areas such as adverse childhood experiences, how professionals involved may be best placed to respond, effective and ethical practice and relevant theoretical frameworks that underpin practice.



MA Childhood, Youth and Family Studies pathway

This MA is aimed specifically at those who would like to work with children (around primary school age) and/or families. Students typically have experience working in schools, charities, faith-based organisations, or government programmes which offer pastoral care to children or families needing extra support.

Potential graduate job destinations include:

- Educational roles such as Child Protection Officer, Learning Mentor or Teaching Assistant
- Family Support Manager or Support Worker; Family Liaison Officer
- Early Years Manager or Support Worker
- Pre-school Manager

For more information, you can watch a short video about the course [here](#).

MA Childhood, Youth and Family Studies: Youth Work pathway

This MA is aimed specifically at those who would like to work with young people (around secondary school age). Students will also typically have experience working in schools, charities, faith-based organisations, but with a focus on supporting young people. The course includes a professional JNC qualification in youth work validated by the National Youth Agency. Therefore, students will also need to be in placement for the duration of the course, but we are able to help students find a placement where you will be working alongside young people.

Potential graduate job destinations include:

- Youth Worker or Youth Work Manager
- Educational roles such as Child Protection Officer, Learning Mentor or Teaching Assistant
- Youth Justice Practitioner
- Outdoor Educator
- Outreach Support Worker or Detached Youth Worker

You can watch a short video about the course [here](#).

Self-Neglect and Hoarding Among Older People

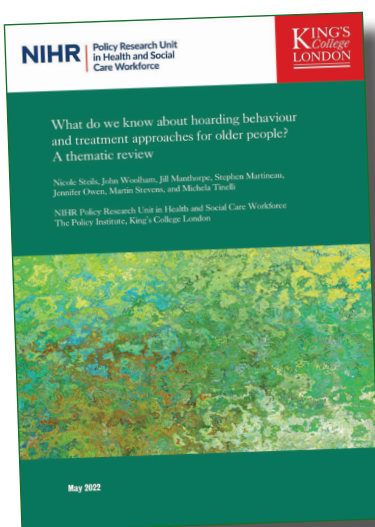
Hoarding behaviour is complex and not always easy to understand. Over the years, several clinical terms have been used in relation to hoarding behaviour, such as clutter(ing), squalor, or Diogenes syndrome. These terms are used to describe the excessive accumulation of items and possessions in people's homes. Hoarding behaviour can lead to dangerous circumstances such as unhygienic living conditions, greater risk of falls, increased risk of injury in fires, homelessness, and even death, as well as harm to other people.

This thematic literature [review](#), by [Dr Nicole Steils](#) and her colleagues at King's College London (KCL), was produced as part of a wider set of ongoing research projects on self-neglect and hoarding (details below). The aim of the review is to provide an overview of research findings and debates for researchers, practitioners, and other interested parties, and to inform the research team's wider study on social care responses to self-neglect and hoarding behaviour among older people in England.

The review explores theories about and definitions of hoarding behaviour and hoarding disorder, known causes for and risk factors associated with hoarding behaviour. It presents research findings on age of onset, progression, severity and prevalence of hoarding behaviour among older people. It also provides

information on what is known about treatment and interventions, including therapeutic approaches, community-based schemes, and medication.

Another section explores critical perspectives on hoarding behaviour discourses and, in the last section, some conclusions and considerations for practice are presented. To read/download the review, click [here](#).



Other KCL research projects on self-neglect and hoarding:

- [Social care responses to self-neglect and hoarding among older people: what works in practice?](#)
- [Opening the "too difficult box": Strengthening adult safeguarding responses to homelessness and self-neglect;](#)
- [Decluttering the homes of people with hoarding behaviours: Local authority commissioning, professional practices, and user experiences](#)
- [Understanding and improving training offers for professionals working with people with hoarding behaviours](#)