

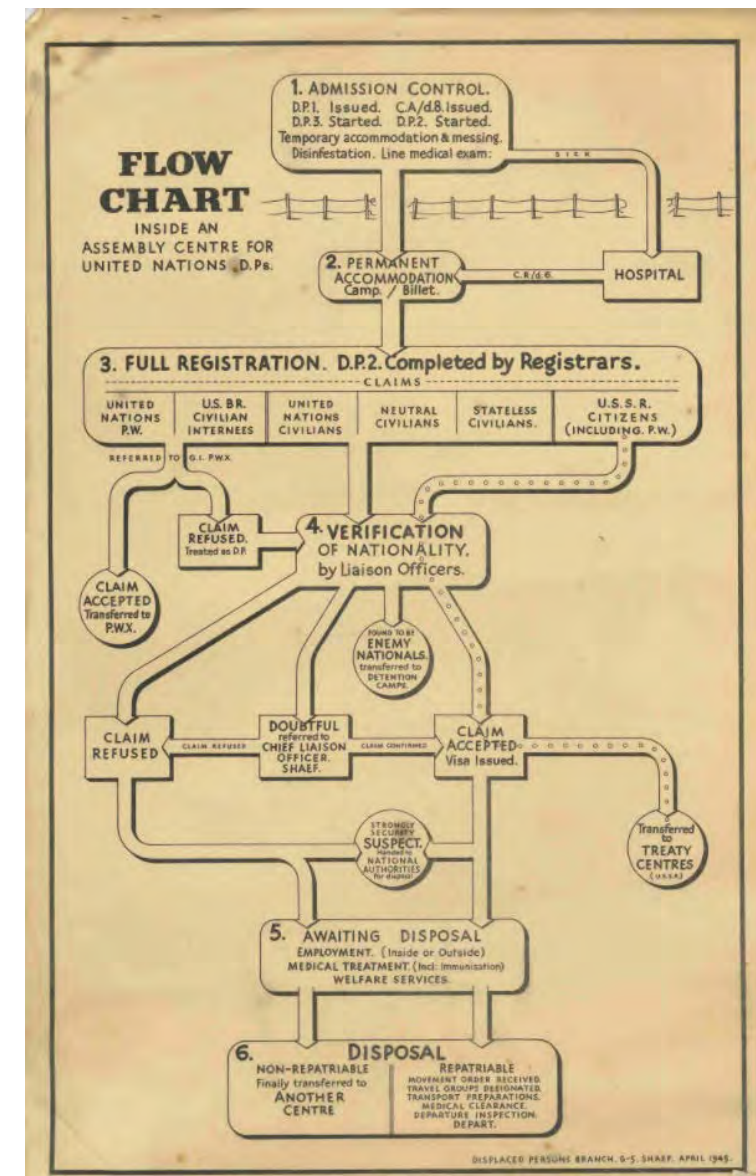
Social Welfare History Archives

Linnea M Anderson

Archivist

ande3748@umn.edu

- Introduction to Archives
- Examples of research topics and types of documents in SWHA
- Searching for social work history in the U.S.
- Why document social work history, why use social work archives
- Research strategy, overview of where to look
- Challenges and opportunities



What are archives?

- Archives contain historical documents (aka primary sources)
- Paper, electronic, media
- Archival collections make historical resources available so that you can use, and repurpose them
- Historical documents in archives are the “Raw Material” of history
- Document the past from a first-hand perspective.
- Created at a particular time, reflect the person, culture, organization that produced them.

¡¡ ATENCIÓN!!
MIEMBROS de RAM
Del CENTRO de WELFARE de BROWNSVILLE 73
(17 HINSDALE STREET)

LUNES - OCTUBRE 6
ES EL PRIMER DIA DE COLECCION
EN LA CAMPAÑA DE RAM PARA
VESTIR NUESTROS HIJOS



En muchos casos el dinero de ropa es consumido por otros gastos, como renta y comida.

ENCUENTRECE AL FRENTE DE
Brownsville Community Devel. Corp. - 444 Hopkinson Ave.
Hora 9 a.m.
De Aqui Marcharemos al 17 Hinsdale St. Para
DEMANDAR EL DINERO DE LA ROPA

 **LIBRARIES**

Archives & Special Collections

Using sources in archives is different, challenging, and engaging.

- Archival research is a different experience from book or journal research
- Archives include handwriting, multiple languages, archaic language, obsolete formats
- Archives are not always neatly organized by subject
- Gaps in historical record
- Overlooked and excluded histories and voices
- These impact the type, organization, availability of records

NOW! 
JUNE 6, 1968



NATIONAL WELFARE LEADERS NEWSLETTER Vol. 2 No 8

 **LIBRARIES**

Archives & Special Collections

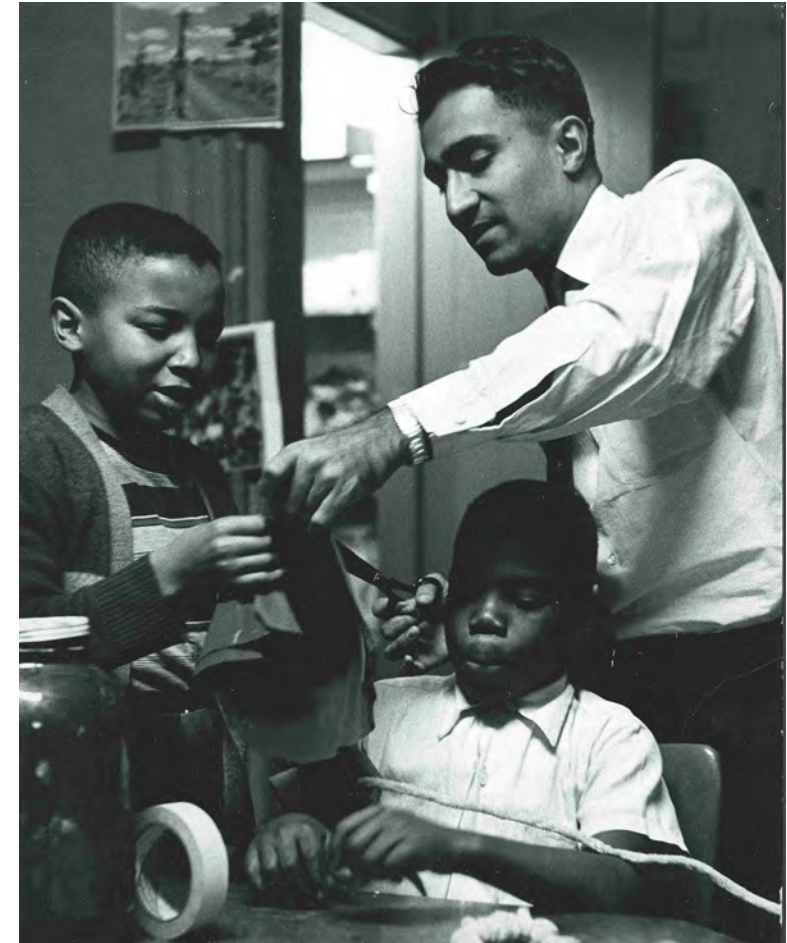
Social Welfare History Archives, research topics

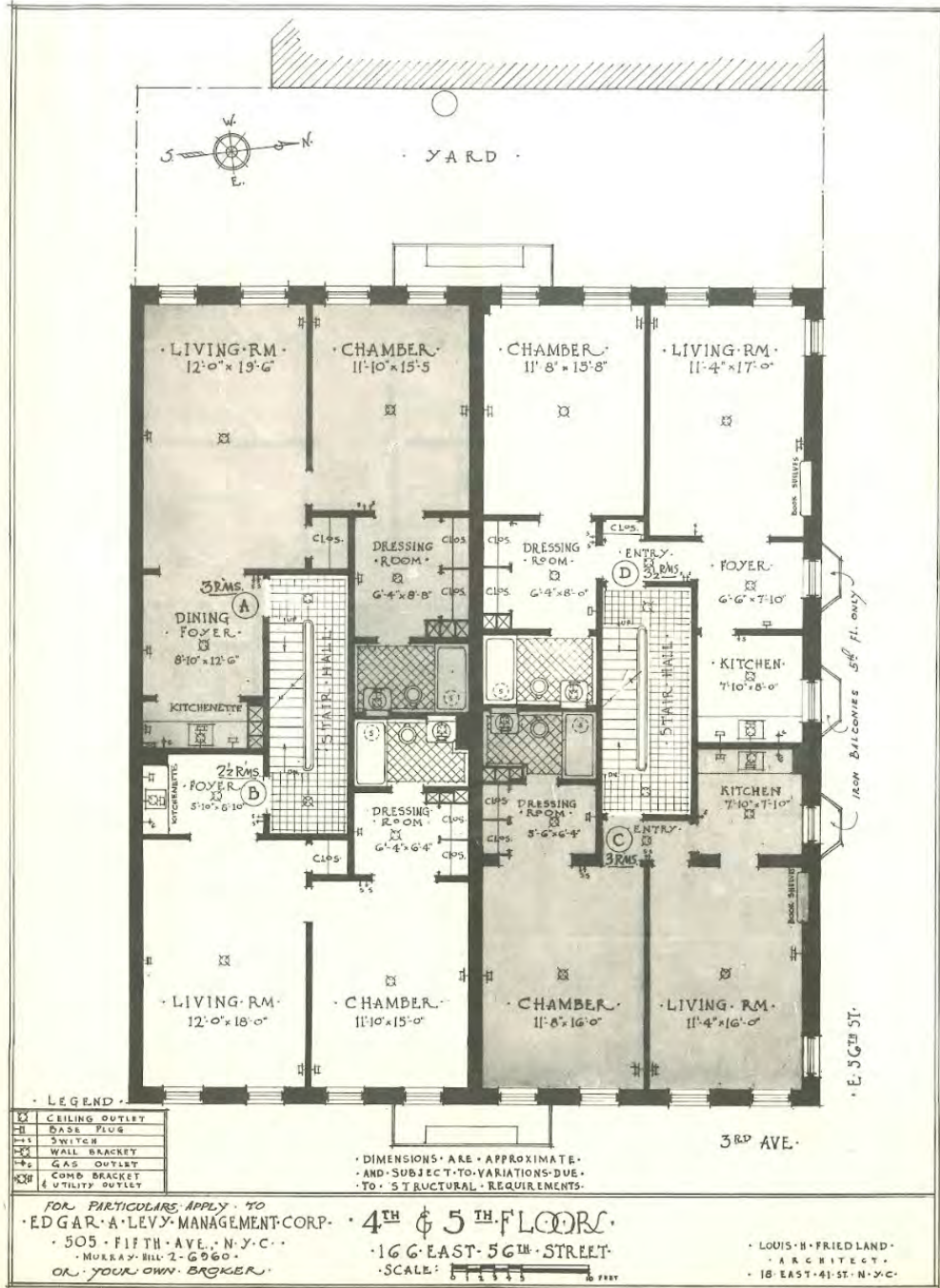
- **Social work education and training:** accreditation standards, curriculum, grad and undergrad programs, professional and para-professional.
- **Social work profession:** practice areas, licensing, professional organizations, ethics, administration and personnel issues
- **Child welfare and youth work:** adoption, foster care, child development, juvenile justice, youth programs, and child protection
- **Health and mental health:** sexual health and sex education, cognitive and physical disabilities, public health, access to healthcare, maternal and child health



Social Welfare History Archives, research topics

- **Social work with groups:** settlement houses and community centers and community-based recreation, arts, educational, and camping programs, community organizing
- **Social work with individuals and families:** casework and counseling services, single parent families, family support programs, teen parents
- **Public- and private-sector assistance programs:** Social Security, unemployment, Medicaid, mothers' pensions, and TANF, as well as theories and attitudes about programs for the elderly, poor, unemployed, children, and persons with disabilities





331.8



"BUYING AND SELLING, SERVING AND BEING SERVED—WOMEN."

Women's Demand for Humane Treatment of Women Workers in Shop and Factory

By RHETA CHILDE DORR

Illustrations from Photographs

Reprinted by special permission from HAMPTON'S MAGAZINE, December, 1909

Copyright, 1909, by BENJ. B. HAMPTON
All Rights Reserved



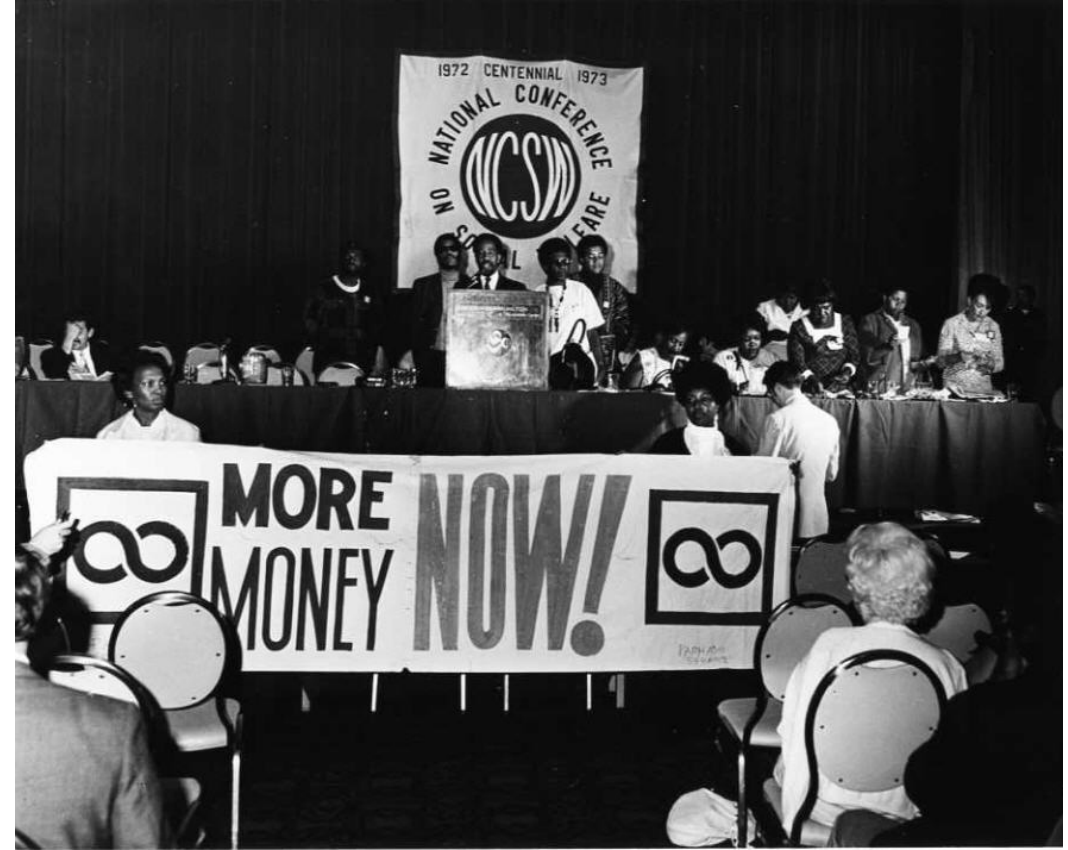
THE NATIONAL CONSUMERS' LEAGUE

105 East 22d Street
NEW YORK



 **LIBRARIES**

Archives & Special Collections



*CASSW - Adm. Organ.
Report of Exec. Secy. file copy 2*

Report of the Secretary of the Association of Training Schools
For Professional Social Work

June 22, 1921.

DO NOT REMOVE

Since the conference at Washington, December 1920, the activities of the Association have been confined to the election of one new member, Loyola University of Chicago, and the preparation of outlines of instruction for community organization which were prepared as the basis for discussion of this Milwaukee conference.

The membership of the Association is now sixteen. There are several schools in operation in different parts of the country which are undoubtedly eligible for membership under the provisions of the Constitution. Heretofore no attempt has been made by the Association itself to enlarge its membership. Consideration has been given only to those schools which have definitely asked to be admitted. At this meeting, the Association should consider whether it wishes to canvass the educational institutions of the country in order to discover schools eligible for admission and take steps to secure their memberships.

During the late winter, after conferring with the president, the secretary canvassed the members of the Association in order to discover how many students were actually being trained by the training schools. It was difficult to decide upon a classification of students which permitted of uniform return. The results could not be effectively tabulated but as far as they go they are as follows:

DATA ON NUMBER OF STUDENTS IN TRAINING

	Total		First Term		3
	1	2	2a	2b	
Boston School of Social Work	35	55	41	14	30
Bryn Mawr	21	23	21	1	1
Carnegie Institute of Technology	8	31			12
Chicago University	11	43	43		10
Loyola University	12	42	42		108
University of Minnesota	27	118	56	62	47
Missouri School of Social Economy					
New York School of Social Work	22	130	82	48	190
University of North Carolina	8	13			51
Ohio State University	36	35	17	18	708
Pennsylvania School For Social Service					
University of Pittsburgh	7	34	30	4	4
Richmond School of Social Work	28	***		none	none
Smith College	x56	93	21	72	306
University of Toronto	xx16	83	49	34	34
Western Reserve University					

*As this is their first year session, they are not graduating any students, but these 8 will approximate the completion of the year's work for a certificate

L1967 46-22

a SURVEY
of FACULTY
 in Graduate
Schools of
Social Work

COUNCIL ON SOCIAL WORK EDUCATION

 LIBRARIES

Archives & Special Collections



CHILD WELFARE LEAGUE OF AMERICA, INC.
130 East Twenty-second Street
New York City

1929

American Public
Welfare Association



FUTURE
CITIZENS ALL

Gordon W. Blackwell
and Raymond F. Gould

 **LIBRARIES**

Archives & Special Collections



12-

"A penny a glass!" Hudson Guild Milk Station.

[i.d.]
File: Riverview Neighbors
Cincinnati

FOR A NATION OF NEIGHBORS

RIVERVIEW NEIGHBORS HOUSE, 925 Martin Place, Cincinnati 2, Ohio, BOARD OF TRUSTEES

<p>Mrs. Murray Seasongood, President Mr. James A. Rheinstrom, President Emeritus Mrs. George Acheson Mr. Robert Albertson Mrs. William Coffey Mr. J. Rawson Collins Mr. Robert W. Crawford</p>	<p>Mr. Paul R. Fochheimer Mrs. Richard Forberg Miss Dorothy Gatch Rev. Mr. Richard Henshaw Mr. Robert Knauft Mr. Leonard S. Meranus Mr. Paul E. Moffett</p>	<p>Dr. Henry W. Ryder Mrs. Richard Goldsmith Mrs. Albert Steiner Mr. Donald Swallow Miss Kathleen Tracy Miss Jacque Wright Mr. Penn W. Zeigler Mr. John E. Hanson, Executive Director</p>
--	---	--

M LIBRARIES

Archives & Special Collections



Social Welfare History Archives

Examples of sources available for research

- Correspondence
- Minutes and proceedings
- Curriculum, teaching materials
- Standards, best practices, manuals
- Reports, studies, and research files
- Financial records, budgets, grants
- Brochures, newsletters, and other publications
- Media, photos, video, audio, posters
- Legislative and policy files
- And many more

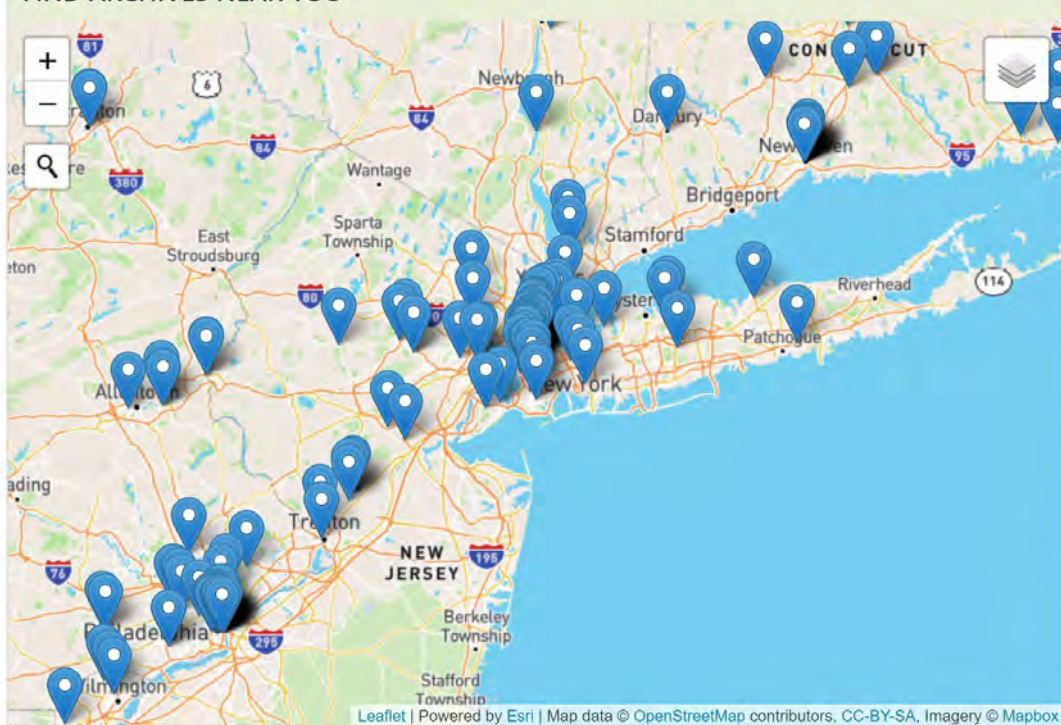




Search for people, places, events, and more

Search

FIND ARCHIVES NEAR YOU



- United States
- ▶ Alabama
- ▶ Alaska
- ▶ Arizona
- ▶ Arkansas
- ▶ California
- ▶ Colorado

ABOUT ARCHIVEGRID

ArchiveGrid includes over 7 million records describing archival materials, bringing together information about historical documents, personal papers, family histories, and more. With over 1,400 archival institutions represented, ArchiveGrid helps researchers looking for primary source materials held in archives, libraries, museums and historical societies.

If you'd like to see your [collections included](#) in ArchiveGrid or have questions about the ArchiveGrid project, please get in touch with us.

LOOKING FOR DIGITAL CONTENT?

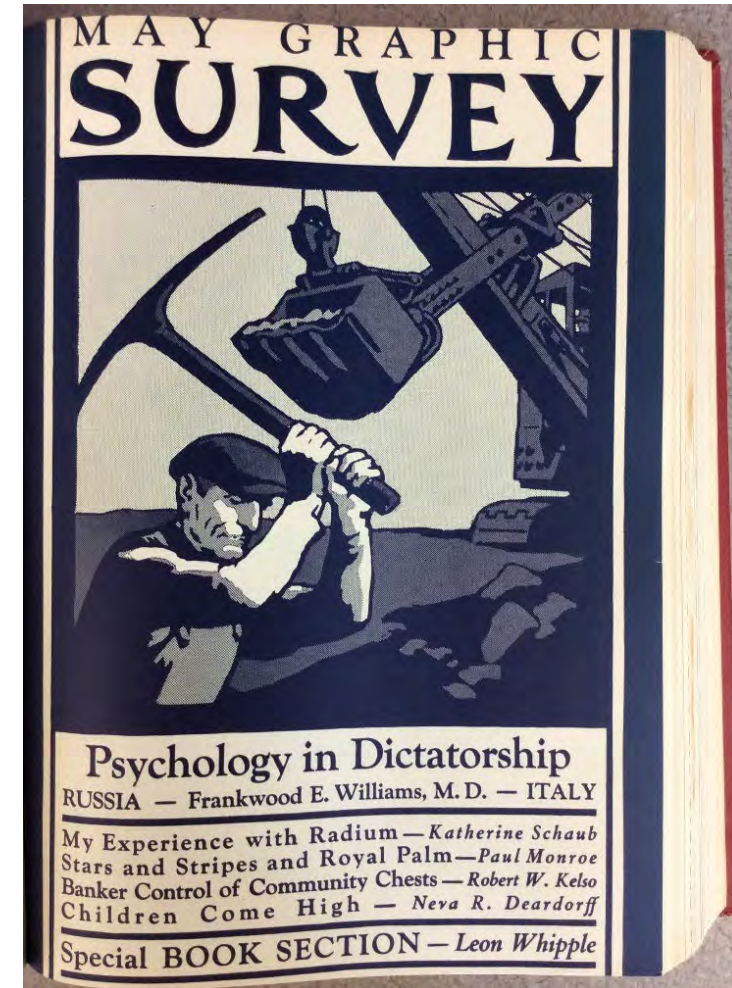
Some collection descriptions include links to images, sound recordings, or other online materials. You can narrow your search results to those that have links to digital content by adding " has_links:1" to your search.

For example: [1918 influenza has_links:1](#)

RECENT ADDITIONS

Research Strategy

- Develop a documentation strategy
- Background research - find possible access points
- Plan where will you look and what terms will you use
- Approach the topic from many angles
- Who was in charge of a program or policy
- What stakeholders and leaders can you document
- Who was funding a program
- Materials from research and policy centers
- Historical terms are important when searching for sources
- Contact the archivist!

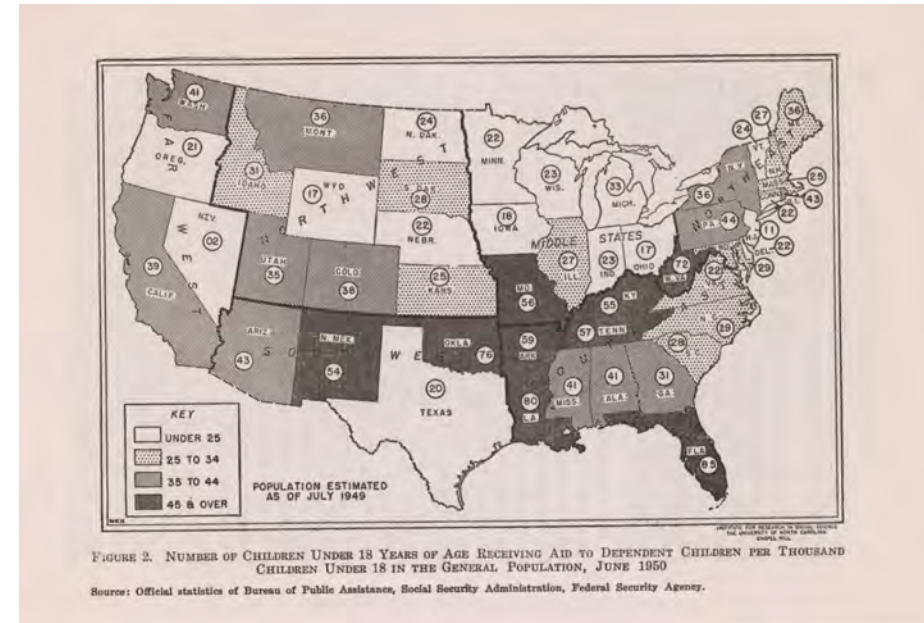


 **LIBRARIES**

Archives & Special Collections

Where to look for archival sources on social work in the U.S.

- Overlapping zones of activity at national, regional, state, county, and local levels
- Multiple resources from different types of organizations at more than one repository.
- Look for records agencies at all levels (Federal to local)
- National Archives, Library of Congress
- State historical societies, archives, legislative libraries
- Regional, city historical societies and libraries
- Organizational and foundation archives
- Academic archives and specialty archives or libraries
- Individual stakeholders' papers
- Public and academic libraries
- Online archives



Importance of documenting and using social work history

- Interesting and relevant
- Interrogating past narratives about human services and social issues. Influence change
- Inform current policy and practice
- Foster understanding of impact past programs and policies
- Foundation for restorative and social justice work - enrich practice and policy with community knowledge and centering impacted communities going forward
- Effective and engaging teaching resource - information literacy, form research questions, locate and use materials, build a framework to use and interrogate challenging or harmful material found in the archives

