

# CBT Informed & Carer Supportive Practice in Psychosis Grad Cert, Grad Dip

Year of entry: 2019

Duration: part-time: Grad Cert eight months, Grad Dip 16 months

Study mode: part-time

[www.kcl.ac.uk/study/postgraduate/taught-courses/cbt-informed-and-carer-supportive-practice-in-psychosis-grad-cert-grad-dip.aspx](http://www.kcl.ac.uk/study/postgraduate/taught-courses/cbt-informed-and-carer-supportive-practice-in-psychosis-grad-cert-grad-dip.aspx)



This PDF was produced in August 2018

This course equips students with the skills to engage people with psychosis and their carers to assess their subjective difficulties, and to deliver innovative brief structured psychological interventions. Workshops, role plays and case discussions will cover practical skills, and the theory informing practice.

The course is designed for frontline mental health professionals, but is also suitable for graduates without a mental health qualification who are interested in pursuing further work or study in the area.

## Key benefits

- The internationally renowned centre for the development and evaluation of cognitive behavioural interventions for people with psychosis and their carers, offers unrivalled access to current innovations in practice and research.
- Students can choose from a selection of interventions to suit their practice or preference.
- The course highlights topical developments in the field.

## Course details

The course is designed to equip frontline mental health professionals with the skills to deliver brief structured interventions for people with psychosis and their carers. Other students usually have a background in psychology, neuroscience, pharmacology, psychiatry, nursing or related disciplines.

Each module is delivered over eight teaching days, with additional assessment sessions. Developing competent practice is emphasised: following workshop examples, role play with audio/video feedback will be used to develop skills. Students will be expected to practice techniques outside teaching hours. Students will have the opportunity to discuss their own cases, or case examples, to apply the work in practice.

An engagement module, which covers models of psychosis and of caregiving in psychosis, and ways of interacting with people with psychosis and their carers together, is compulsory. A selection of other interventions can then be chosen, each covered over a module.



## Teaching

You will be taught through a mix of lectures, seminars and tutorials.

### Part time

Module name	Lectures (hours)	Seminars/tutorials (hours)	Field/lab/studio/supervised learning (hours)	Self-directed study (hours)	Total
Advanced Engagement Skills	48	2	100	150	300
Specific Interventions	48	2	100	150	300
Specific Interventions for Voices & Delusions	48	2	100	150	300
Working With Young People Who Have Psychosis or Unusual Experiences & Their Carers	48	2	100	150	300
Supervised Practice in CBT Informed & Carer Supportive Interventions in Psychosis	14	36	100	150	300

Typically, one credit equates to 10 hours of work.

Contact time is based on 28 academic weeks.

## Assessment

You are assessed through a combination of coursework and practical assessments and may typically expect assessment by:

Examination	Practical
50%	50%

The study time and assessment methods detailed above are typical and give you a good indication of what to expect. However, they may change if the course modules change.

## Regulating body

King's College London is regulated by the Office for Students.



## Course structure

Courses are divided into modules. You will normally take:

- ♦ Graduate Diploma – modules totalling 120 credits
- ♦ Graduate Certificate – modules totalling 60 credits

### Required modules

You are required to take:

- ♦ Advanced Engagement Skills (30 credits)

### Optional modules

In addition, you are required to take 30 credits if you are taking the Grad Cert and 90 credits if you are taking the Grad Dip, from a range of optional modules which may typically include:

- ♦ Specific Interventions (30 credits)
- ♦ Specific Interventions for Voices & Delusions (30 credits)
- ♦ Working With Young People Who Have Psychosis or Unusual Experiences & Their Carers (30 credits)
- ♦ Supervised Practice in CBT Informed & Carer Supportive Interventions in Psychosis (30 credits)

Optional modules may only run if a minimum number of students enrol onto them.

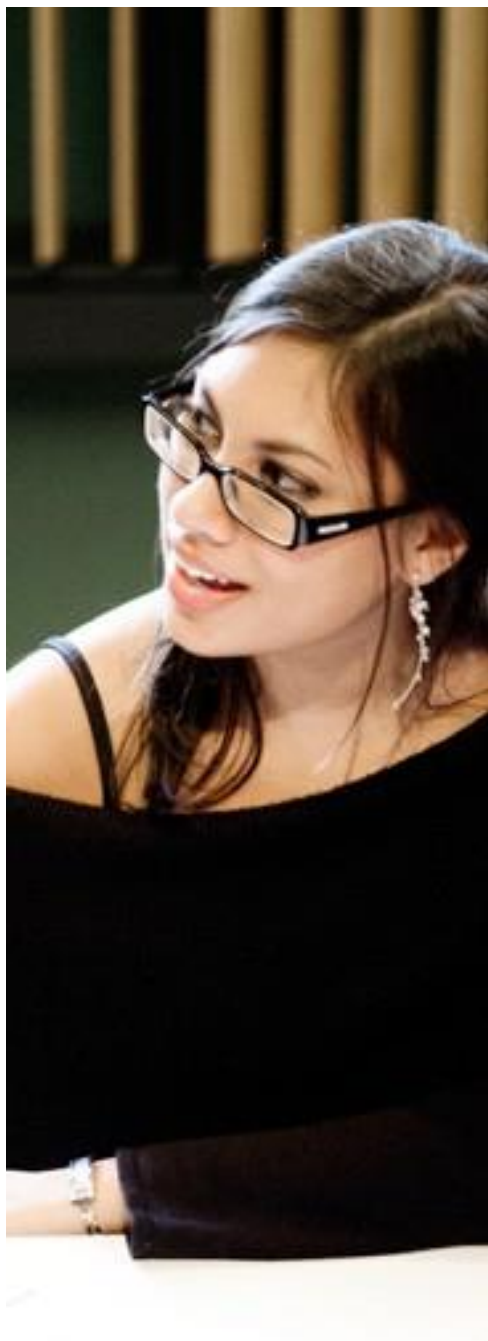
King's College London reviews the modules offered on a regular basis to provide up-to-date, innovative and relevant programmes of study. Therefore, modules offered may change. We suggest you keep an eye on the course finder on our website for updates.

## Location

Our course is primarily taught at the King's College London Denmark Hill Campus.

Students implement in their own workplaces. Students are not required to travel to any other site as part of the course.





## Fees and funding

### Full-time and part-time tuition fees – UK

The UK tuition fees for the 2019-20 academic year are available on the course web page.

Please note that the tuition fees for subsequent years of study may be subject to increases in line with King's terms and conditions.

### Full-time and part-time tuition fees – EU

Students starting their programme in 2019/20 (September 2019) who are eligible to pay EU fees will pay the same rate of tuition fees as UK students. This will apply for the duration of their programme but may be subject to change by the UK Government for subsequent cohorts from 2020/21.

The UK tuition fees for the 2019-20 academic year are available on the course web page.

Please note that the tuition fees for subsequent years of study may be subject to increases in line with King's terms and conditions.

### Full-time and part-time tuition fees – International

The International tuition fees for the 2019-20 academic year are available on the course web page.

Please note that the tuition fees for subsequent years of study may be subject to increases in line with King's terms and conditions.

### Deposit

When you receive an offer for this course you will be required to pay a non-refundable deposit to secure your place. The deposit will be credited towards your total fee payment. This will not apply if you are funded by the NHS.

The UK/EU deposit is £500.

The International deposit is £2,000.

For further information, please visit the fees and funding section of our website:

[www.kcl.ac.uk/study/postgraduate/fees-and-funding/index.aspx](http://www.kcl.ac.uk/study/postgraduate/fees-and-funding/index.aspx)

### Additional costs

In addition to your tuition fees, you can also expect to pay for:

- books if you choose to buy your own copies
- Disclosure Barring Service (DBS) check
- clothing for optional course related events and competitions
- library fees and fines
- personal photocopies
- printing course handouts
- society membership fees
- stationery
- travel costs for travel around London and between campuses
- graduation costs
- alternative venue [examination fees](#)

### Disclaimer

Although this PDF was up-to-date at the time it was produced, please make sure you check our website [www.kcl.ac.uk/study](http://www.kcl.ac.uk/study) or contact us directly for the very latest information before you commit yourself to any of our courses.

### Contact us

Tel +44 (0)20 7836 5454

