

Clinical Neuropsychiatry MSc

Year of entry: 2019

Duration: full-time: one year, part-time: two years

Study mode: full-time, part-time

www.kcl.ac.uk/clinical-neuropsychiatry-msc



This PDF was produced in August 2018

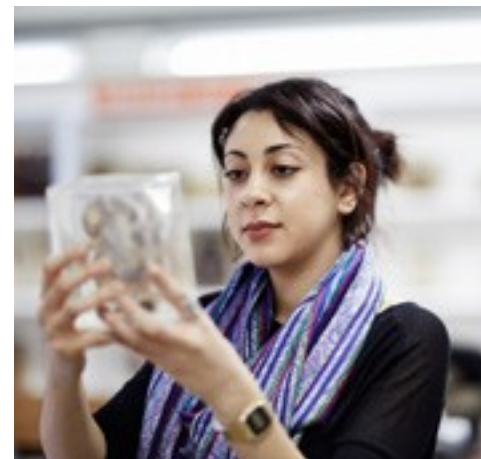
Clinical neuropsychiatry considers mental disorders from a neurological standpoint. It is an exciting and developing area of study.

Our MSc in Clinical Neuropsychiatry will allow students to develop the skills and knowledge required to specialise in neuropsychiatry as a clinician or academic. We welcome biomedical and psychology graduates, as well as psychiatrists, neurologists and psychologists onto the course.

Key benefits

- SLaM offers the widest range of mental health services in the UK and provides one of only two NHS inpatient neuropsychiatry units.
- Unrivalled access to international experts across clinical and basic sciences relevant to neuropsychiatry.
- State-of-the-art equipment: Centre for Neuroimaging Sciences, MRC Social Genetic & Developmental Psychiatry Centre, Maurice Wohl Neuroscience Centre, NIHR Biomedical Research Centre (the only Mental Health specific centre of its kind). Access to EEG/ERPs and TMS equipment at King's College Hospital.
- Clinical observership (subject to availability) - including practical experience of clinical assessment and management. This scheme will give the student exposure to the work of the wide variety of neuropsychiatry services in the South London and Maudsley NHS Foundation Trust (SLaM) and

related disciplines such as neurology and neuropsychology within the wider King's Health Partners (KHP) – particularly those at King's College Hospital (KCH). These modules will include clinical supervision and mentorship in presenting case discussions.



Course details

You will gain training in the key scientific and clinical aspects of clinical neuropsychiatry and related research. The course offers a clinical element, including practical experience of clinical assessment and management through clinical observerships. Examples of services where clinical observerships may be possible includes inpatient and outpatient neuropsychiatry, liaison psychiatry, memory clinics, epilepsy, stroke, brain injury rehab, multiple sclerosis, movement disorders, motor neurone disease and functional neurological disorders. Students cannot be guaranteed their first choice of observership.

Students will have unrivalled access to international experts (both clinical and non-clinical) across the spectrum of clinical and basic sciences relevant to neuropsychiatry.

Teaching

You will be taught through a mix of lectures, seminars and tutorials.

Module name	Lectures (hours)	Seminars/tutorials (hours)	Field/lab/studio/supervised learning (hours)	Self-directed study (hours)	Total (hours)
Scientific Foundations of Neuropsychiatry	30	15	15	240	300
Neuropsychiatric Disorders	30	15	15	240	300
Research Methods & Statistics	42	5	26	227	300
Management of Neuropsychiatric Disorders	30	15	15	240	300
Research Project on Affective Disorders	-	-	-	600	600

Contact time is based on 24 academic weeks. Typically, one credit equates to 10 hours of work.

Assessment

You are assessed through a combination of coursework and examinations and may typically expect assessment by:

Examination	Coursework	Practical
55%	30%	15%

The study time and assessment methods detailed above are typical and give you a good indication of what to expect. However, they may change if the course modules change.

Regulating body

King's College London is regulated by the Office for Students.

Course structure

Courses are divided into modules, and students on this course take modules totalling 180 credits.

Required modules

You are required to take:

- Scientific Foundations of Neuropsychiatry (30 credits)
- Neuropsychiatric Disorders (30 credits)
- Management of Neuropsychiatric Disorders (30 credits)
- Research Methods & Statistics (30 credits)
- Dissertation (60 credits)

Optional modules

There are no optional modules for this course.

Part-time students should plan to take 60 credits of required taught modules in their first year; and 60 credits of required taught modules, as well as the 60 credit dissertation module in their second year.

King's College London reviews the modules offered on a regular basis to provide up-to-date, innovative and relevant programmes of study. Therefore, modules offered may change. We suggest you keep an eye on the course finder on our website for updates.

Location

This course is primarily taught at the King's College London Denmark Hill Campus.

Location of optional clinical observerships is variable but may include:

- The Maudsley Hospital & King's College Hospital (both at Denmark Hill Campus)
- The Royal Bethlem Hospital, Beckenham
- St Thomas' Hospital, Waterloo
- Guy's Hospital, London Bridge

Career prospects

Upon completion, you will have a solid understanding of the concepts, theories and practicalities that are relevant to clinical neuropsychiatry. The course will prepare you for a career in neuropsychiatry, or will serve as professional development to enhance your current career as a clinician or policy maker. Other course graduates may go on to conduct further full-time study in an academic research environment (e.g. PhD) or in a taught clinical course (e.g. Doctorate in Clinical Psychology) or gain employment in an academic, clinical or pharmaceutical organisation.





100817D1

Fees and funding

Full-time and part-time tuition fees – UK

The UK tuition fees for the 2019–20 academic year are available on the course web page.

Please note that the tuition fees for subsequent years of study may be subject to increases in line with King's terms and conditions.

Full-time and part-time tuition fees – EU

Students starting their programme in 2019/20 (September 2019) who are eligible to pay EU fees will pay the same rate of tuition fees as UK students. This will apply for the duration of their programme, but may be subject to change by the UK Government for subsequent cohorts from 2020/21.

The UK tuition fees for the 2019–20 academic year are available on the course web page.

Please note that the tuition fees for subsequent years of study may be subject to increases in line with King's terms and conditions.

Full-time and part-time tuition fees – International

The International tuition fees for the 2019–20 academic year are available on the course web page.

Please note that the tuition fees for subsequent years of study may be subject to increases in line with King's terms and conditions.

Deposit

When you receive an offer for this course you will be required to pay a non-refundable deposit to secure your place. The deposit will be credited towards your total fee payment.

The UK/EU deposit is £500.

The International deposit is £2,000.

For further information, please visit the fees and funding section of our website: www.kcl.ac.uk/study/postgraduate/fees-and-funding/index.aspx

Additional costs

In addition to your tuition fees, you can also expect to pay for:

- books if you choose to buy your own copies
- DBS checks
- clothing for optional course related events and competitions
- library fees and fines
- personal photocopies
- printing course handouts
- society membership fees
- stationery
- graduation costs
- travel costs for travel around London, between campuses and to your optional clinical observership.

Disclaimer

Although this PDF was up-to-date at the time it was produced, please make sure you check our website www.kcl.ac.uk/study or contact us directly for the very latest information before you commit yourself to any of our courses.

Contact us

Tel +44 (0)20 7836 5454