

# Neuroscience MSc

Year of entry: 2019

Duration: full-time: one year, part-time: two years

Study mode: full-time, part-time (the part-time course runs on alternate years)

[www.kcl.ac.uk/neuroscience-msc](http://www.kcl.ac.uk/neuroscience-msc)



This PDF was produced in August 2018

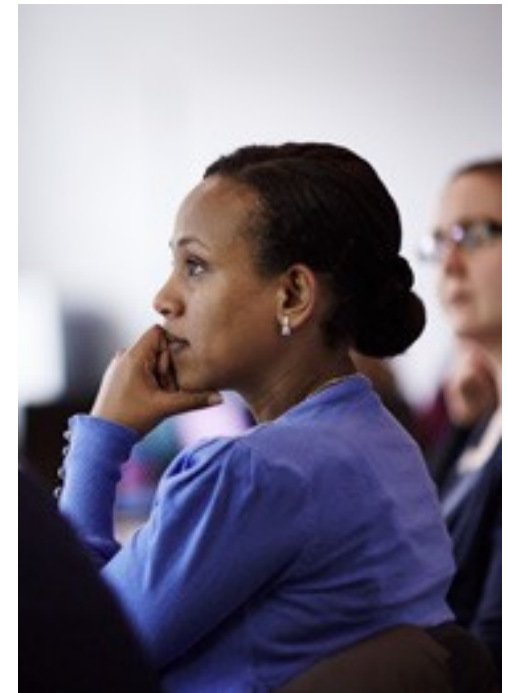
Our Neuroscience MSc course will provide you with multidisciplinary training in a range of neuroscience topics, particularly those relevant to psychiatry, psychology and neurology. It seeks to equip graduates from a wide range of backgrounds for the next stage of their career, which may be either further full-time study in a neuroscience-related academic research environment, or employment in an academic, clinical or pharmaceutical organisation.

## Key benefits

- Appeals to students from a variety of backgrounds.
- Offers specialised graduate training in several neuroscience subject areas, both clinical and non-clinical.
- Aims to equip all graduates for the next stage of their career. Teaching is research-led and prepares graduates for careers in a broad range of sectors including academic research and medical, clinical, or pharmaceutical environments, or scientific publishing.

## Course details

Our Neuroscience course offers three taught required fundamental modules, followed by one taught specialised optional module (from a choice of approximately six) and an approximately 20 week research project. Students choosing a research project in the same subject area as their specialised module may graduate with an MSc Neuroscience in that speciality.



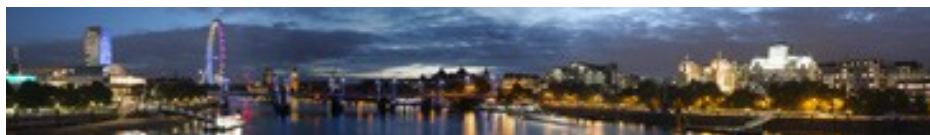
## Teaching

You will learn through a mix of research-led lectures, seminars, tutorials and self-study.

Module name	Lectures (hours)	Seminars/tutorials (hours)	Field/lab studio/supervised learning (hours)	Self-study time (hours)	Total (hours)
<b>Required modules</b>					
A1 Fundamental Neuroscience	25	8	5	262	300
A2 Fundamental Neuroscience	25	8	5	262	300
A3 Fundamental Neuroscience	25	8	5	262	300
<b>Optional modules</b>					
B Neuroscience Research (part-time students only)	25	8	5	262	300
B1 Psychiatric Genetics Research	25	8	5	262	300
B3 Developmental Neurobiology Research	25	8	5	262	300
B4 Neurodegeneration Research	25	8	5	262	300
B5 Neuroimaging Research	25	8	5	262	300
B7 Cognitive Neuroscience Research	25	8	5	262	300
B8 Neural Stem Cells and Nervous System Repair Research	25	8	5	262	300

Contact time is based on 24 academic weeks.

Typically, one credit equates to 10 hours of work.



## Assessment

You are assessed through a combination of coursework and examinations and may typically expect assessment by:

full time (one year)

Year	Examination	Coursework	Practical
1	46.7%	20%	33.3%

part-time (two years)

Year	Examination	Coursework	Practical
1	60%	40%	-
2	33.3%	-	66.7%

The study time and assessment methods detailed above are typical and give you a good indication of what to expect. However, they may change if the course modules change.

## Regulating body

King's College London is regulated by the Office for Students.

## Course structure

The course is divided into taught and research modules. Over the course of your study you will take modules totalling 180 credits.

## Required taught modules

You are required to take:

- Fundamental module 1 (30 credits)
- Fundamental module 2 (30 credits)
- Fundamental module 3 (30 credits).



## Optional taught modules

In addition, students take 30 credits from a range of optional modules that may typically include:

- B1 Psychiatric Genetics Research (30 credits)
- B3 Developmental Neurobiology Research (30 credits)
- B4 Neurodegeneration Research (30 credits)
- B5 Neuroimaging Research (30 credits)
- B7 Cognitive Neuroscience Research (30 credits)
- B8 Neural Stem Cells & Nervous System Repair Research (30 credits)

## Research modules

The research component will allow students to gain training and experience in hypothesis-driven academic research. Students also take 60 credits from a range of research modules that may typically include:

- C Research project in Neuroscience (60 credits)
- C1 Research project in Psychiatric Genetics (60 credits)
- C3 Research project in Developmental Neurobiology (60 credits)
- C4 Research project in Neurodegeneration (60 credits)
- C5 Research project in Neuroimaging (60 credits)
- C7 Research project in Cognitive Neuroscience (60 credits)
- C8 Research project in Neural Stem Cells & Nervous System Repair (60 credits)

King's College London reviews the modules offered on a regular basis to provide up-to-date, innovative and relevant programmes of study. Therefore, modules offered may change. We suggest you keep an eye on the course finder on our website for updates.

## Location

Our course is primarily taught at the King's College London Denmark Hill Campus.

Project work may be carried out at other institutions and centres of excellence.

## Career prospects

This course provides excellent training for students who wish to pursue a broad range of careers including an academic or research career, or those who wish to enter medical school, the pharmaceutical industry, or train as clinical psychologists, or work as scientific writers.



## Fees and funding

### Full-time and part-time tuition fees – UK

The UK tuition fees for the 2019–20 academic year are available on the course web page.

Please note that the tuition fees for subsequent years of study may be subject to increases in line with King's terms and conditions.

### Full-time and part-time tuition fees – EU

Students starting their programme in 2019/20 (September 2019) who are eligible to pay EU fees will pay the same rate of tuition fees as UK students. This will apply for the duration of their programme, but may be subject to change by the UK Government for subsequent cohorts from 2020/21.

The UK tuition fees for the 2019–20 academic year are available on the course web page.

Please note that the tuition fees for subsequent years of study may be subject to increases in line with King's terms and conditions.

### Full-time and part-time tuition fees – International

The International tuition fees for the 2019–20 academic year are available on the course web page.

Please note that the tuition fees for subsequent years of study may be subject to increases in line with King's terms and conditions.

### Deposit

When you receive an offer for this course you will be required to pay a non-refundable deposit to secure your place. The deposit will be credited towards your total fee payment.

The UK/EU deposit is £500.

The International deposit is £2,000.

For further information, please visit the fees and funding section of our website: [www.kcl.ac.uk/study/postgraduate/fees-and-funding/index.aspx](http://www.kcl.ac.uk/study/postgraduate/fees-and-funding/index.aspx)

## Additional costs

In addition to your tuition fees, you can also expect to pay for:

- books if you choose to buy your own copies
- clothing for optional course related events and competitions
- DBS checks
- library fees and fines
- personal photocopies
- printing course handouts
- society membership fees
- stationery
- travel costs for travel around London and between campuses
- graduation costs.

## Disclaimer

Although this PDF was up-to-date at the time it was produced, please make sure you check our website [www.kcl.ac.uk/study](http://www.kcl.ac.uk/study) or contact us directly for the very latest information before you commit yourself to any of our courses.

## Contact us

Tel +44 (0)20 7836 5454

