

Organisational Psychiatry & Psychology MSc

Year of entry: 2019

Duration: one year: full-time, two years: part-time

Study mode: full-time, part-time

www.kcl.ac.uk/organisational-psychiatry-and-psychology-msc



This PDF was produced in August 2018

Our Organisational Psychiatry & Psychology course is unique in the UK and Europe. It draws on contemporary psychological, psychiatric and organisational theory to examine the causes, effects and consequences of mental ill health in the workplace and considers strategies and interventions to improve organisational and individual mental health. It leads to careers in HR, wellbeing, inclusion and diversity, health and safety and consultancy.

Key benefits

- Only course of its kind to be offered in the UK.
- Focus is on mental health in the workplace.
- Combines psychological, psychiatric and organisational perspectives.

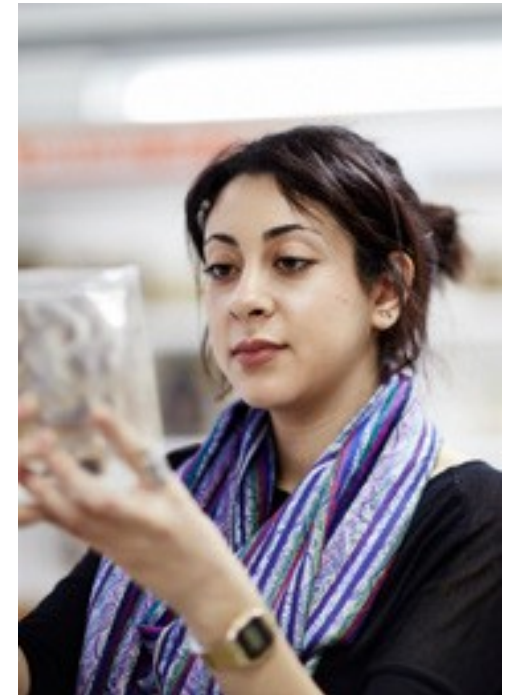


Course details

Our Organisational Psychiatry & Psychology course is one of the first of its kind in the UK and Europe and is designed for people who wish to gain up-to-date knowledge and understanding of psychology and psychiatry as applied to the workplace.

Students include HR managers, organisational consultants, psychiatrists and psychiatric nurses, occupational health professionals and psychology graduates wishing to enter these occupations.

Our course is approved by the British Psychological Society Learning Centre for the purposes of Continuing Professional Development (CPD). It has also achieved accreditation from the Association for Business Psychology (ABP). It draws on psychological, psychiatric and organisational theory and evidence to examine the causes, effects and consequences of mental ill health in the workplace.



Teaching

You will be taught through a mix of lectures, seminars and tutorials.

Module name	Lectures (hours)	Seminars/tutorials (hours)	Self-study time (hours)	Total (hours)
Basic Mental Health	40	10	250	300
Organisational Research Methods	40	10	250	300
Mental Health in the Workplace (OPP1)	40	10	250	300
Managing Mental Capital & Well-being in the Workplace	20	5	125	150
Strategic Interventions for Psychological Well-being in Organisations (OPP3)	20	5	125	150
Dissertation in Organisational Psychiatry & Psychology	-	6	594	600

Contact time is based on 22 academic weeks. Part-time students attend lectures two to three days per week. Full-time students are expected to use (one day) on self-study.

Typically, one credit equates to 10 hours of work.

Assessment

You are assessed through a combination of coursework and examinations and may typically expect assessment by:

Examination	Coursework	Practical
30%	50%	20%

The study time and assessment methods detailed above are typical and give you a good indication of what to expect. However, they may change if the course modules change.

Regulating body

King's College London is regulated by the Office for Students.

Course structure

Courses are divided into modules. Over the course of your study you will take modules totalling 180 credits.

Required modules

You are required to take the following modules:

- Basic Mental Health (30 credits)
- Organisational Research Methods (30 credits)
- Mental Health in the Workplace (OPP1) (30 credits)
- Managing Mental Capital & Well-being in the Workplace (15 credits)
- Strategic Interventions for Psychological Well-being in Organisations (OPP3) (15 credits)
- Dissertation in Organisational Psychiatry & Psychology (60 credits)

Optional modules

There are no optional modules for this course.

Part time students should plan to take 90 credits in year 1, and 90 credits, including the 60 credit dissertation in year 2.

King's College London reviews the modules offered on a regular basis to provide up-to-date, innovative and relevant programmes of study. Therefore, modules offered may change. We suggest you keep an eye on the course finder on our website for updates.

Location

Our course is primarily taught at the King's College London Denmark Hill Campus.

Career prospects

Our graduates pursue various careers in the management of mental health policy and services in the workplace, either within HR departments or as organisational consultants offering a range of services from policy development to intervention delivery.



Fees and funding

Full-time and part-time tuition fees – UK

The UK tuition fees for the 2018–19 academic year are available on the course web page.

Please note that the tuition fees for subsequent years of study may be subject to increases in line with King's terms and conditions.

Full-time and part-time tuition fees – EU

Students starting their programme in 2019/20 (September 2019) who are eligible to pay EU fees will pay the same rate of tuition fees as UK students. This will apply for the duration of their programme, but may be subject to change by the UK Government for subsequent cohorts from 2020/21.

The UK tuition fees for the 2018–19 academic year are available on the course web page.

Please note that the tuition fees for subsequent years of study may be subject to increases in line with King's terms and conditions.

Full-time and part-time tuition fees – International

The International tuition fees for the 2018–19 academic year are available on the course web page.

Please note that the tuition fees for subsequent years of study may be subject to increases in line with King's terms and conditions.

Deposit

When you receive an offer for this course you will be required to pay a non-refundable deposit to secure your place. The deposit will be credited towards your total fee payment.

The UK/EU deposit is £500.

The International deposit is £2,000.

For further information, please visit the fees and funding section of our website: www.kcl.ac.uk/study/postgraduate/fees-and-funding/index.aspx

Additional costs

In addition to your tuition fees, you can also expect to pay for:

- books if you choose to buy your own copies
- DBS checks
- clothing for optional course related events and competitions
- library fees and fines
- personal photocopies
- printing course handouts
- society membership fees
- stationery
- travel costs for travel around London and between campuses
- graduation costs.

Disclaimer

Although this PDF was up-to-date at the time it was produced, please make sure you check our website www.kcl.ac.uk/study or contact us directly for the very latest information before you commit yourself to any of our courses.

Contact us

Tel +44 (0)20 7836 5454

