

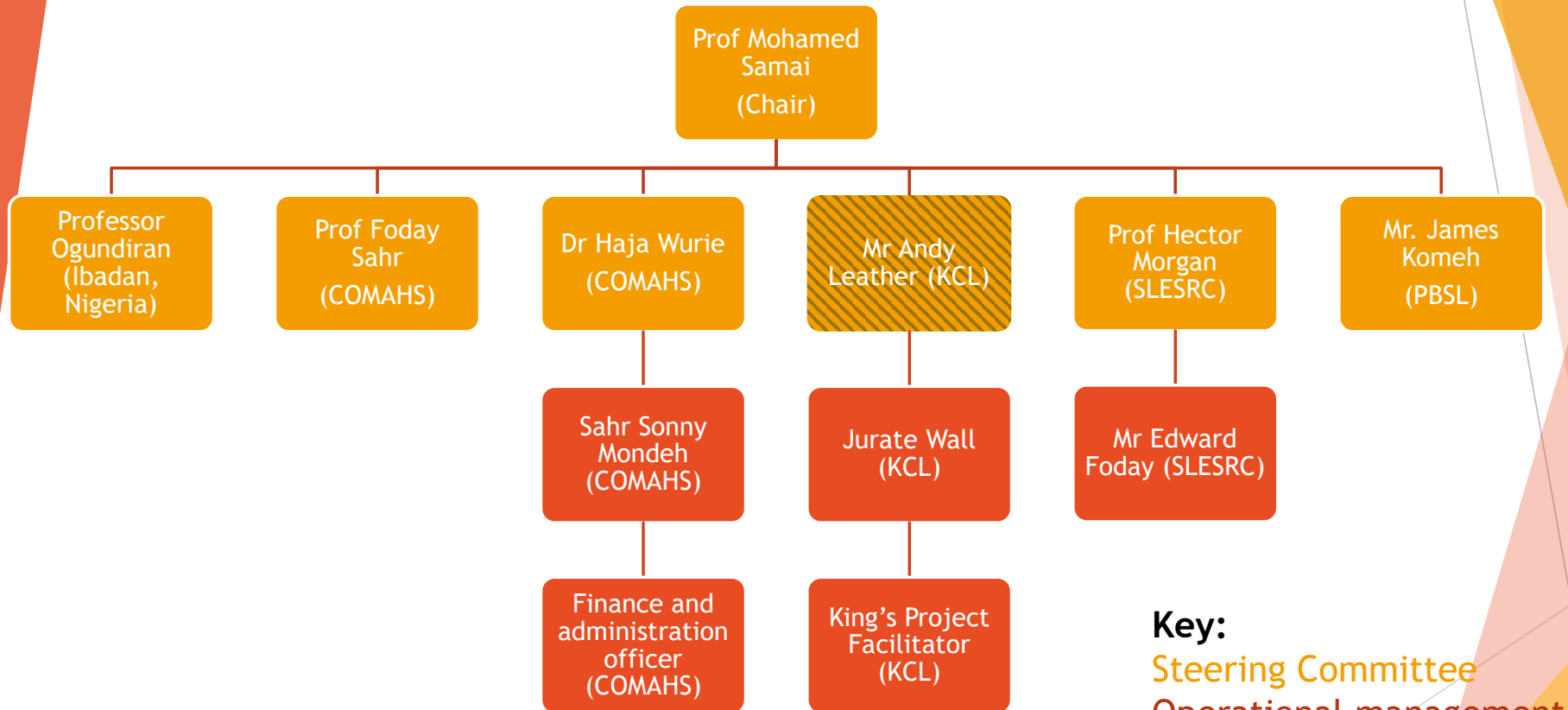
Strengthening Ethics and Regulatory Capacity in Sierra Leone- SERCLe

Introduction to the project

Mr Andy Leather, Senior Lecturer in Global Health and Surgery, KCL



Organogram- SERCLe



Key:
Steering Committee
Operational management group

Background to the project

- applications are increasing
- increasingly complex studies
- capacity challenges

Project Aim

‘to strengthen ethics governance, technical expertise and operational capacity in order to ensure research is conducted in a contextually appropriate and rigorous manner, to protect the rights of participants and promote positive impact of research’

Project objectives: governance

- To strengthen the governance structures of SLESRC
- To improve collaboration between SLESRC and PBSL
- To improve oversight by the SLESRC of IRBs

Project objectives: technical expertise

- To develop individual technical capacity
- To develop institutional capacity to conduct training

Project objectives: operational capacity

- To develop SLESRC and PBSL institutional administrative and financial capacity
- To introduce enhanced information and financial management systems
- RHInnO Ethics and REAPS will present at the workshop

The EDCTP project

- Phases: baseline, implementation, evaluation
- *‘at baseline, we will conduct an institutional capacity assessment through a desk review and stakeholder consultation. We will then hold a workshop to review findings and develop context specific interventions with local buy-in’*

Work package progress

5 work packages:

1. Ethics governance
2. Technical expertise
3. Operational capacity
4. Project management
5. Dissemination

All the work packages are a collaboration between partners

WP1-Ethics governance (SLESRC only)

- Baseline phase:
 - desk-based analysis of current documents
 - stakeholder interview analysis
 - literature review findings
- Implementation phase:
 - development of strategy, policy, standard operating procedures and guidelines
- Evaluation phase:
 - validation of these documents

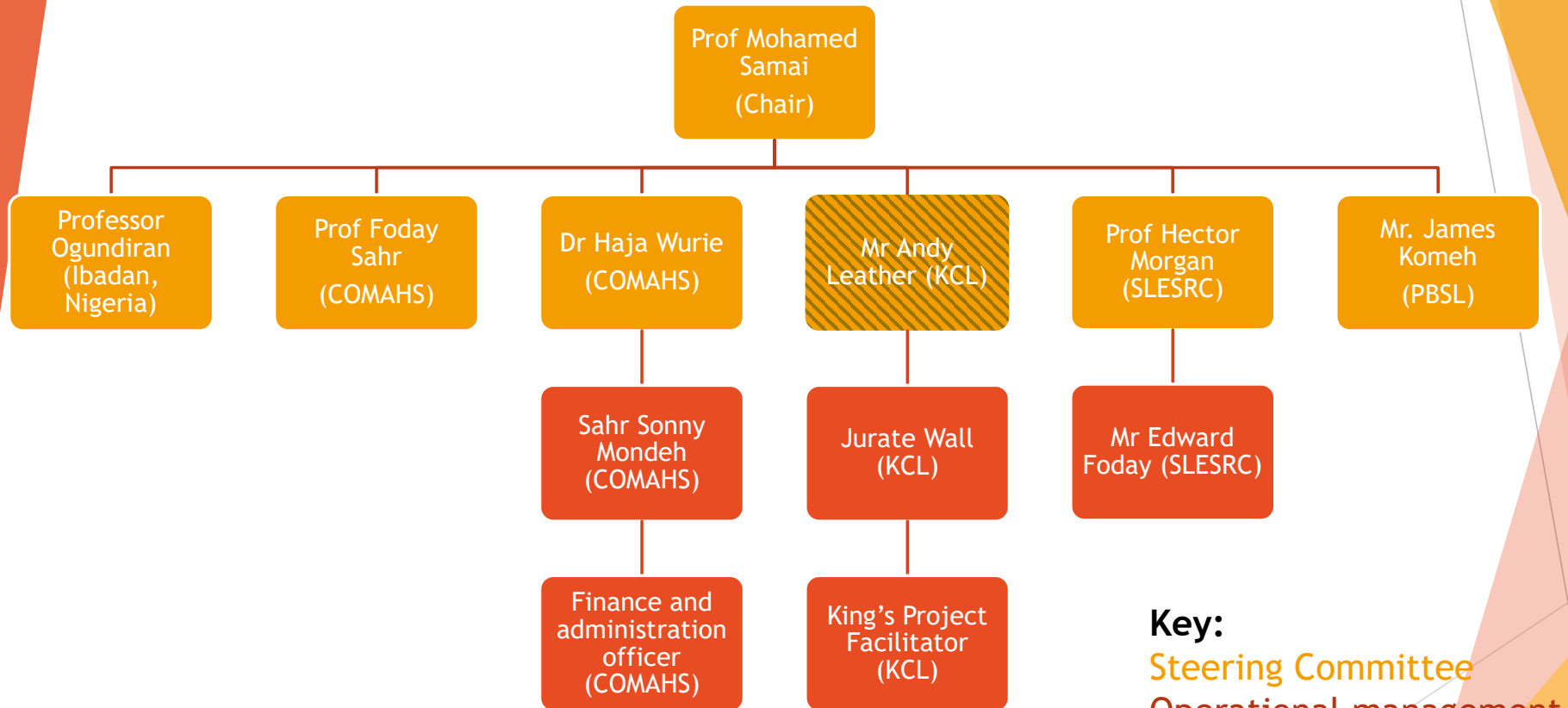
WP2- Technical expertise (SLESRC and PBSL)

- Baseline phase:
 - inventory of current capacity
 - identify training needs
 - collate case studies
- Implementation phase:
 - define competencies
 - develop training materials
 - formal training
- Evaluation phase:
 - validation of materials

WP3- Operational capacity

- Baseline phase:
 - financial and administrative procedures
- Implementation phase:
 - infrastructure activities
 - implementation of electronic database
 - training
- Evaluation phase:
 - validation of materials

WP4- Project Management



Key:
Steering Committee
Operational management group

WP5- Dissemination

- dissemination plan is being drafted
- materials developed during the project will be uploaded onto PBSL and SLECRC websites

Any questions?

Thank you!

