

FACULTY OF SOCIAL SCIENCE & PUBLIC POLICY
SCHOOL OF GLOBAL AFFAIRS
LAU CHINA INSTITUTE

KING'S
College
LONDON

China Week

China as an education, research and development superpower?

16–20 October 2023



#ChinaWeek2023

Education and research

A large, multi-level library with a central staircase and bookshelves. The library is filled with books on shelves that form the walls and the steps of the staircase. Several people are seen walking on the different levels, some looking at books. The lighting is warm and focused on the central staircase area.

This year's China Week explores the theme of education and research, looking at the opportunities and challenges presented by China as a potential global leader in education, research and development – and what it means for how we continue to do research in, on and with China.

Welcome

Welcome to the Lau China Institute's annual flagship China Week – a week-long programme of events designed to engage you in a deeper dialogue on modern China. We're delighted to be joined by experts from across academia, industry and government to discuss the theme of education and research.

In 2022, China's research and development (R&D) spend accounted for 2.55% of its GDP and investment in basic research was at 6% of total research spend. Growing year-on-year, China's investment in R&D is predicted to put them on a path to becoming the world's largest R&D spender by 2025.

While R&D is the backbone of innovation, international cooperation will be fundamental to greater technological innovation and breakthrough. Speaking at the Zhongguancun Forum in Beijing in June, Xi Jinping noted the importance of global technological collaboration.

China remains a crucial partner for tackling today's most pressing global issues from climate change to global health, to dealing with AI.

As UK Foreign Secretary, James Cleverley, highlighted earlier this year in his speech on UK-China relations: '...to give up on dialogue with China would be to give up on addressing humanity's greatest problems.'

The Lau China Institute opens its doors and invites you to join us as we explore China's progress in education and research, the values that underpin this, and how they may lead to better outcomes for both society and the planet.

We have a diverse programme of panel discussions, talks and film screenings. Details of our events can be found within this programme.

We look forward to seeing you.



View our events at:
kcl.ac.uk/china-week

About the Lau China Institute

Through high quality, high impact, innovative and multidisciplinary teaching and research, as well as engagement in public dialogue, we aim to increase knowledge and understanding of China in the UK, and beyond.

Established in 2011, the Lau China Institute is home to a community of core academics and postgraduate students dedicated to enhancing knowledge and understanding of contemporary China through multidisciplinary and innovative research. We also work with affiliations from across the King's community to facilitate their research interests in Greater China. Based within the School of Global Affairs, we seek research collaborations and deeper mutual understanding with the People's Republic of China, along with partners across the globe, ensuring we sit at the heart of King's strategic approach.

China's rise has had, and will continue to have, a significant impact on the world. The Lau China Institute conducts analytically rigorous research across a range of areas including China's political economy, Chinese international relations and Chinese elite politics.

Our projects include looking at the history and development of Britain's relations with China, the politics of internal migration, environmental governance and China's Belt and Road Initiative.



The hidden agendas of China's ruler for life

Willy Lam presents his new book about the policy, ideology and politics of Xi Jinping and China's 'ruler for life'.

13.00 – 14.30 BST

River Room, King's Building, Strand Campus

kcl.ac.uk/visit/strand-campus



Speaker:

- Willy Lam, Senior Fellow, Jamestown Foundation

Moderator

- Yanran Yao, Lecturer in Chinese Business and Political Economy, Lau China Institute, King's College London

How to engage with China: opportunities and risks

Who benefits from research collaboration with China, and what are the risks? Are the risks inflated or downplayed? Should UK research institutions continue to engage with Chinese counterparts, and if so, how?

18.00 – 21.00 BST

Great Hall, King's Building, Strand Campus

kcl.ac.uk/visit/strand-campus



Celebrate China Week 2023 with our opening panel and drinks reception.

Speakers:

- Simon Marginson, Professor of Higher Education and Director of the Oxford Centre for Global Higher Education, University of Oxford
- Sophia Gaston, Head of Foreign Policy and UK Resilience Policy Exchange
- Mark Logan, Member of Parliament for Bolton and North East and China APPG
- Harry Anderson, Assistant Director for Policy and Global Engagement, Universities UK International
- Michael Natzler, Masters student, Yenping Academy, Peking University, Beijing

Moderator:

- Fiona Quimbre, Senior Analyst, RAND Europe

Welcome:

- Professor Shitij Kapur, President and Principal, King's College London

Opening remarks:

- Kerry Brown, Professor of Chinese Studies and Director, Lau China Institute, King's College London

Discourse, rhetoric and shifting political behaviour in China

Dr Cerenkova examines the rule of Xi Jinping and the rhetoric of the contemporary Chinese political system in this book talk.

10.00 – 11.30 BST

Inigo Rooms SW-1.09, Somerset House East Wing,
Strand Campus kcl.ac.uk/visit/strand-campus



Speaker:

- Una Aleksandra Bērziņa-Cērenkova, Head of the China Studies Centre, Rīga Stradins University

Moderator

- Kerry Brown, Professor of Chinese Studies and Director, Lau China Institute, King's College London



Thing's you can't say – Academic censorship in China and China Studies

Panellists discuss the growing problem of academic censorship in China, from how it impacts scholars in Chinese universities to the problems posed for scholars overseas.

18.30 – 20.00 BST

Council Room, King's Building, Strand Campus
kcl.ac.uk/visit/strand-campus



Speakers:

- Eva Pils, Professor of Law, King's College London
- Ivan Franceschini, Senior Lecturer in Chinese Studies, University of Botswana
- Jue Jiang, Marie Skłodowska-Curie Fellow and Teaching Fellow, School of Oriental and African Studies
- Tim Pringle, Reader in Labour, Social Movements and Development, School of Oriental and African Studies

Moderator:

- Jane Hayward, Lecturer in China and Global Affairs, Lau China Institute, King's College London

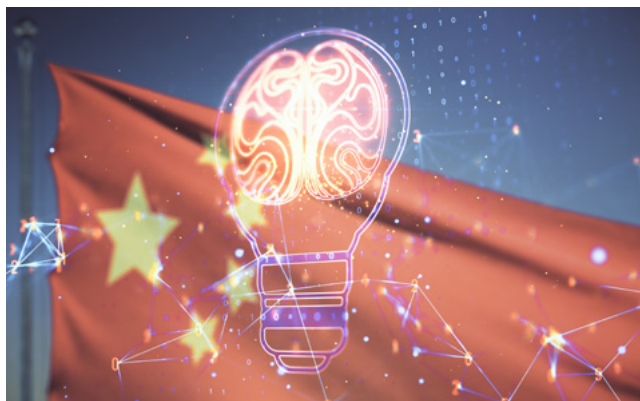
AI and the future of education and research

Looking beyond the hype and the headlines, this panel offers expert insight into the ways AI policy and educational practice are playing out across diverse contexts in China.

10.00 – 11.30 BST

River Room, King's Building, Strand Campus

kcl.ac.uk/visit/strand-campus



Speakers:

- Jeremy Knox, Associate Professor in Digital Education, University of Oxford
- Karen Hao, Journalist and contributing writer at The Atlantic
- Li Yuan, Director of the Centre for Connective Intelligence in Education, Beijing Normal University

Moderator:

- Ye Liu, Reader in International Development, King's College London

This is a hybrid event.

Illiberal education in China: A close look at educational institutions under Xi

How has the party-state transformed Chinese education in the decade since Xi rose to power? Experts discuss politicisation and participation within China's education system.

19.00 – 20.30 BST

Council Room, King's Building, Strand Campus

kcl.ac.uk/visit/strand-campus



Speakers:

- Anca Crowe, Consultant and Teacher in History and Politics
- Henrik Nykvist, Doctoral Research Fellow, MF Norwegian School of Theology, Religion and Society
- Jérôme Doyon, Junior Professor, Centre for International Studies, Sciences Po
- Yunyun Zhou, Associate Professor, University of Oslo

Moderator:

- Konstantinos Tsimonis, Senior Lecturer in Chinese Society, Lau China Institute, King's College London

Children at a Village School: by Jiang Nengjie

Join us for a special screening of documentary-film, Children at a Village School, about China's left-behind children followed by panel discussion.

Day 3 Wednesday 18 October

16.00 – 18.45 BST

The Garden Cinema, 39-41 Parker Street, London WC2B 5PQ



Introduction

- Jiang Nengjie, filmmaker and director

Speakers:

- Lisa Lin, Lecturer in Screen Industries & Cultures, Department of Culture, Media and Creative Industries, King's College London
- Xiaxia Yang, Research Associate in Migration, Lau China Institute, King's College London

Moderator:

- Giulia D'Aquila, PhD student, Lau China Institute, King's College London

Film run-time: 90min

Event held in partnership with **SineScreen** – an emerging screening project showcasing independent cinema from China and East and Southeast Asia.

About the film:

Children in a Village School follows three families of 'left-behind' children in rural Hunan whose parents have migrated to the city for work. Filmed over five years, the hardships faced by the village children provide a glimpse into the reality of life, and education, of the millions of children in rural China who are left to live with their grandparents or other relatives whilst their parents work low-paid jobs in the bigger cities.

Jiang Nengjie is a well-known independent filmmaker, documentarian and director. He was born in Hunan province in 1985 and was part of the first generation left behind by parents looking for work in the city. *Children at a Village School* is the second in a trilogy of ethnographic documentaries by the filmmaker examining the life and education of children in Guang'an village, Hunan province. His other works include *The Ninth Grade*, *Jia Yi* and *The Road*.

Inequality and exclusion in the contemporary Chinese education system

Experts examine how China's broader inequalities have contributed to inequality and exclusion within the education system.

16.00 – 17.30 BST

River Room, King's Building, Strand Campus

kcl.ac.uk/visit/strand-campus



Speakers:

- Charlotte Goodburn, Reader in Chinese Politics and Development and Deputy Director, Lau China Institute
- Emily Hannum, Professor of Sociology and Education, University of Pennsylvania
- Xiaxia Yang, Research Associate in Migration, Lau China Institute, King's College London
- Ye Liu, Reader in International Development, King's College London

Moderator:

- Ji Shi, PhD student, Lau China Institute, King's College London

This is a hybrid event.

Minority education in the Xi Era

Panellists discuss the transformation of minority education under Xi Jinping.

18.30 – 21.00 BST

8th floor North and South, Bush House, Strand Campus

kcl.ac.uk/visit/bush-house



Speakers:

- Katherine Swancutt, Reader in Social Anthropology, King's College London
- Robert Barnett, Professorial Research Associate, School of Oriental and African Studies
- Uradyn Bulag, Professor in Social Anthropology, University of Cambridge
- Yiming Dong, Research Associate, Department of International Development, King's College London

Moderator:

- Thomas White, Lecturer in China and Sustainable Development, Lau China Institute, King's College London

This event will be followed by drinks and networking.

What Xiconomics means for foreign business

What does China's dual circulation strategy mean for foreign business? Andrew Cainey presents his new book co-authored by Christiane Prange.

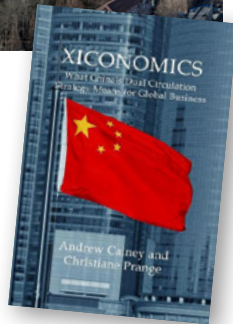
13.00–14.00 BST

Bush House Lecture Theatre 1, Bush House
kcl.ac.uk/visit/bush-house



Speaker:

- Andrew Cainey, Senior Associate Fellow, Royal United Services Institute



Implications of China's rise as an 'information superpower'

This roundtable considers what it means to conduct 'critical' research on Chinese politics and society today.

15.30–17.00 BST

Anatomy Museum, King's Building, Strand Campus
kcl.ac.uk/visit/strand-campus



Speakers:

- Hannah Theaker, Lecturer in History and Politics, University of Plymouth
- William A Callahan, Professor in International Relations, LSE
- David Stroup, Lecturer in Chinese Studies, The University of Manchester
- Astrid Nordin, Lau Chair and Professor of Chinese International Relations, King's College London

Moderator:

- David Tobin, Lecturer in East Asian Studies, University of Sheffield

On the Confucian Communist comeback in contemporary China

What explains the return of Confucianism and communism in China? And what are the implications for Chinese academia and the political system?

18.00 – 21.00 BST

Great Hall, King's Building, Strand Campus
kcl.ac.uk/visit/strand-campus



Join us for our closing reception over drinks, canapes and music by the SOAS Silk and Bamboo ensemble.

Welcome:

- Charlotte Goodburn, Reader and Deputy Director, Lau China Institute, King's College London

Closing keynote (virtual):

- Daniel A. Bell, Professor, Chair of Political Theory, University of Hong Kong in conversation with Astrid Nordin, Lau Chair and Professor of Chinese International Relations, King's College London

Thank you to our event partners

We would like to thank all of our supporting partners of China Week 2023



Lau China Institute

School of Global Affairs, Faculty of Social Science & Public Policy, King's College London
Bush House, North East Wing, 40 Aldwych, London WC2B 4BG

 [@lauchinainst](https://twitter.com/lauchinainst)

 [/lauchinainstitute](https://www.facebook.com/lauchinainstitute)

 [@kings_lauchinainstitute](https://www.instagram.com/kings_lauchinainstitute)

 [/lau-china-institute](https://www.linkedin.com/company/lau-china-institute)

[kcl.ac.uk/lci](https://www.kcl.ac.uk/lci)

For media and partnership inquiries

Please email the School of Global Affairs: sgacomms@kcl.ac.uk