

Intercalated BSc in Primary Care – GP Placement

Summary Infographic

For more information please contact primarycareibsc@kcl.ac.uk

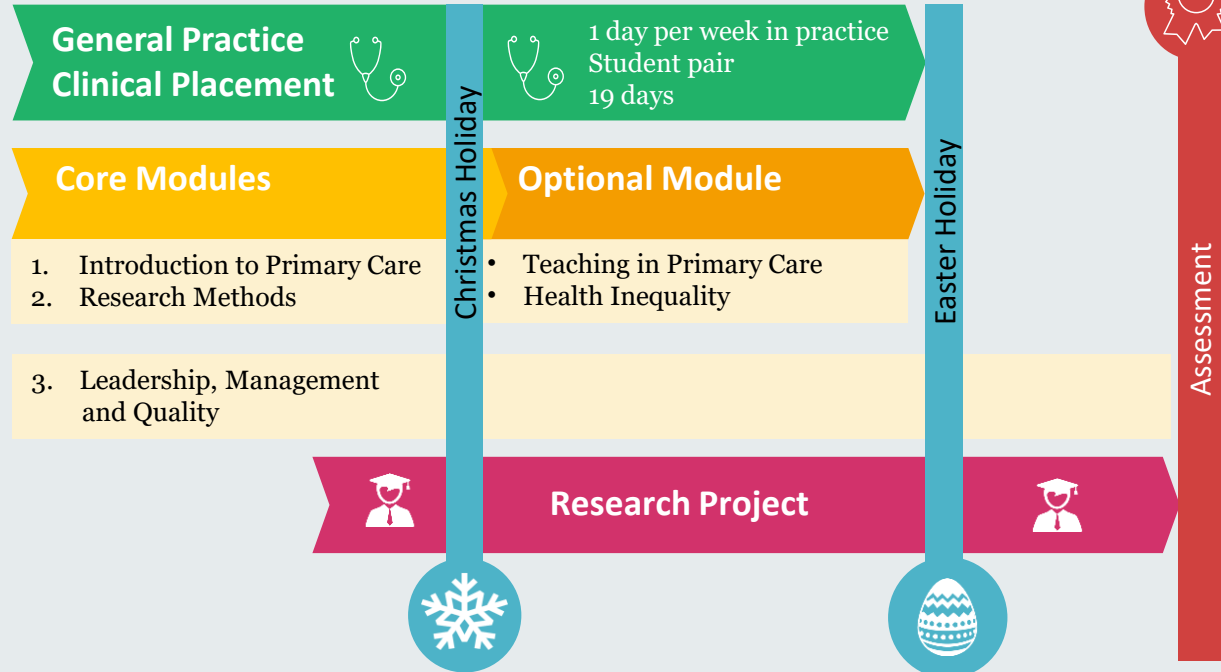
Overview

The intercalated BSc in Primary Care is an exciting opportunity for medical students to engage further with a general practice clinical experience whilst also studying aspects of primary care in more depth and undertaking a research project. It will inspire doctors and health care leaders of the future, and give an excellent generalist grounding to students planning a career in both general practice and other medical careers, equipping them with the skills necessary to lead integrated and innovative care.

Practice Benefits

- Longitudinal pedagogical relationship
- Student teamwork and contribution
- Student led health promotion clinics
- Quality improvement project
- Research Project to benefit practice
- Opportunity to develop future GPs
- £6,000 per student pair

Intercalated BSc Year Plan



Practice Requirements

