

Intercalated BSc in Primary Care

Summary Infographic

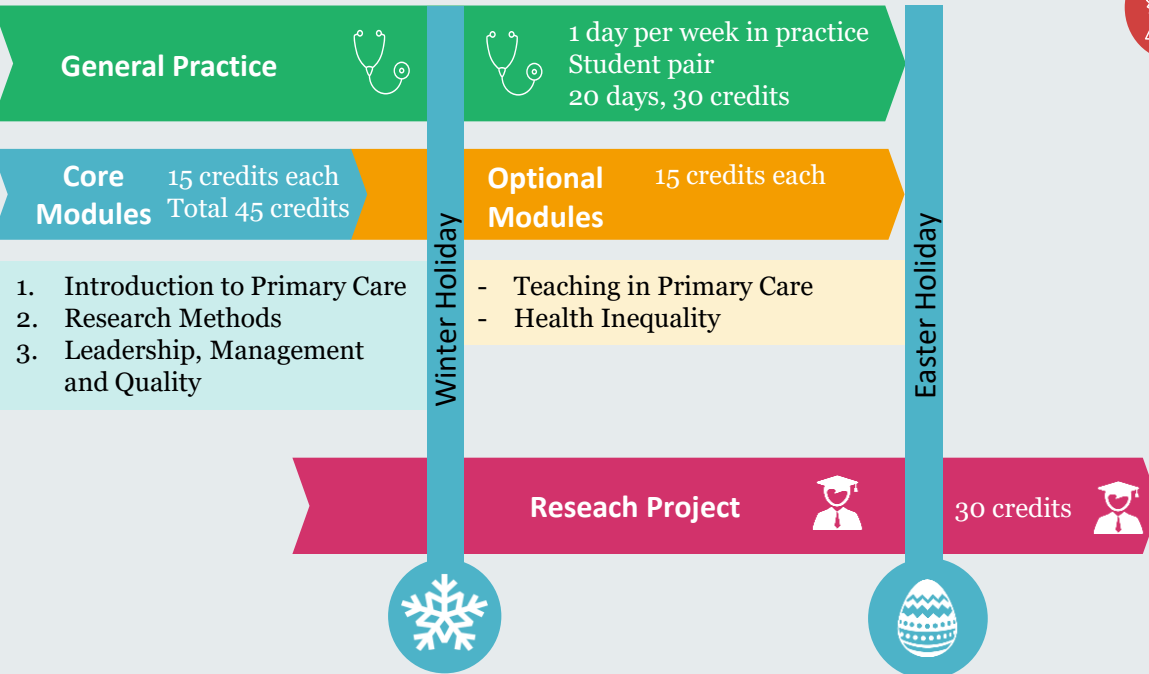
"The course is so well run and well organised. You are supported ... the feedback you receive on work is brilliant."

Overview

The intercalated BSc in Primary Care is an exciting opportunity for you to engage further with a General Practice clinical experience whilst also studying aspects of Primary Care in more depth and undertaking a research project. It will inspire doctors and health care leaders of the future, and give an excellent generalist grounding to students planning a career in both General Practice and other medical careers, equipping them with the skills necessary to lead integrated and innovative care.

There is flexibility for you to pursue an area of interest in more depth so this course is highly desirable for those planning a myriad of careers, as well as future GPs.

Intercalated BSc Year Plan



Benefits to you

Clinical Placement

- Allowing you to refine and develop your clinical skills
- Student led health promotion clinics will not only develop your skills in motivational interviewing but will enhance your clinical knowledge and awareness of holistic care

Teamwork

- Chance to work as part of a clinical team, giving you further opportunities as you develop trusting relationships with the practice team.

Leadership

- Opportunities for leadership and support to develop this
- Foster independent, resourceful and creative thinking to help you make the most of your year and that will distinguish you in your future career

Mentorship

- Support from faculty, GP tutor and peer group.
- Your coaching and mentorship skills developed.

Scholarship

- Wide range of research projects
- Support towards conference presentations and publication
- Support with essay writing

Student Feedback

"Loved having placement each week! It was so good to attend without being an official medical student as it meant we could have a little more free reign to choose what to do, and that freedom really let us explore many areas."

For more information please contact primarycareibsc@kcl.ac.uk