

The School of Cardiovascular and Metabolic Medicine & Sciences at King's College London invites applications for **four new Faculty positions** open to applicants from **Lecturer to Professor**. We seek applications from creative individuals with a bold vision who have demonstrated excellence in research.

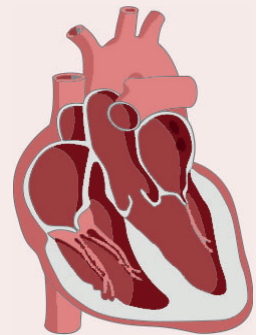
We are particularly interested in candidates with experience in:

Human iPSC-based disease modelling, in particular for inherited cardiomyopathies and with an interest in pursuing gene editing

Molecular and cellular biology of cardiomyocytes, including mechanobiology, biology of the sarcomere and the roles of non-coding RNAs

Autophagy, as a cardioprotective and anti-ageing mechanism for the heart and vasculature

Cardiac metabolism, especially with a focus on adaptation in heart failure



We particularly welcome candidates with proven experience in cutting edge technologies, including, for example, high throughput genomic screens, single cell/nucleus sequencing, ex vivo cardiac muscle generation, primary myocardial slices, non coding RNAs or CRISPR/Cas9 technologies. The successful candidates will have a track record of outstanding first or lead author publications, demonstrable ability to drive independent research, secure research funding and contribute to teaching. The successful candidates will be offered state of the art laboratory facilities as well as a competitive salary and an attractive starting package.

Further information: Professor Mauro Giacca, mauro.giacca@kcl.ac.uk

Administrative support: Ms. Dinah Parekh, dina.parekh@kcl.ac.uk

Applications: <https://jobs.kcl.ac.uk/gb/en/job/042765/Lecturer-Senior-Lecturer-Professor> **nature** careers

Closing date for applications: 11th April 2022

The School of Cardiovascular and Metabolic Medicine & Sciences (SCMMS), directed by Professor Mauro Giacca, provides an outstanding multi-disciplinary environment for the pursuit of cutting-edge cardiovascular and metabolic research (<https://www.kcl.ac.uk/scms>). We study the fundamental molecular, cellular, and physiological processes that underly normal and abnormal cardiovascular and metabolic function and drive the translation of this strong basic science into advances in clinical practice. The School occupies facilities across the Guy's, St Thomas' and Denmark Hill campuses of King's College London and comprises over 65 clinical and non-clinical academic groups, hosting 400 personnel and 110 PhD students. Our community of world-renowned researchers and

educators have access to a state-of-the art core facilities and expertise, including facilities for high-throughput screening, multimodality in vivo imaging, proteomics, integrative physiology and viral & non-viral vector production. As part of King's Health Partners, we have an excellent environment for basic-clinical interaction and a strong focus on mentoring and career development. The School is a partner of the NIHR Biomedical Research Centre at Guy's and St. Thomas', which offers world class facilities for translational studies and phase I/II clinical trials. The School hosts the British Heart Foundation Centre of Research Excellence at King's (led by Professor Ajay Shah), which brings together a unique range of internationally renowned scientists and clinicians from across the School and King's College London.

