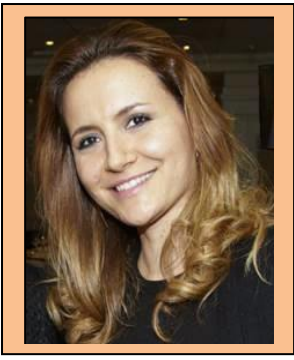


CURRICULUM VITAE

MED. UNIV. DR. VIRGINIA KAMVISSI-LORENZ



PERSONAL INFORMATION:

- Born 1980 in Athens, Greece
- Nationality Greek & German

CURRENT EMPLOYMENT:

- Senior Research Associate, King's College London, Division of Diabetes & Nutritional Sciences
- Transcampus Chief Co-ordinator and Advisor, Faculty of Life Sciences, King's College London
- Hon. Specialist Doctor, King's College Hospital, Department of Renal and Liver Surgery

EDUCATION:

- 1985-1998 Primary School and High School education: American College of Athens, Greece
- 1998 – 2005 Medical School, 2nd Medical Faculty of Charles University, Prague, Czech Republic
- 2005 -2006 National Institutes of Health and Development (NICHD) at NIH, Bethesda, Maryland, USA
- 2006 – 2013 Specialization to General Internal Medicine, Medical Clinic III, University Hospital Carl Gustav Carus, Dresden, Germany
- 2013: Board Certification on General Internal Medicine, Dresden, Germany

PUBLICATIONS:

- 1) Adrenal hyperplasia and adenomas are associated with inhibition of phosphodiesterase 11A in carriers of PDE11A sequence variants that are frequent in the population. Horvath A, Giatzakis C, Robinson-White A, Boikos S, Levine E, Griffin K, Stein E, *Kamvissi V*, Soni P, Bossis I, de Herder W, Carney JA, Bertherat J, Gregersen PK, Remmers EF, Stratakis CA. *Cancer Res.* 2006 Dec
- 2) Apoptosis in patients with dilated cardiomyopathy and diabetes: a feature of diabetic cardiomyopathy? Kuethe F, Sigusch HH, Bornstein SR, Hilbig K, *Kamvissi V*, Figulla HR. *Horm Metab Res.* 2007 Sep
- 3) Prevalence of parvovirus B19 and human bocavirus DNA in the heart of patients with no evidence of dilated cardiomyopathy or myocarditis. Kuethe F, Lindner J, Matschke K, Wenzel JJ, Norja P, Ploetze K, Schaal S, *Kamvissi V*, Bornstein SR, Schwanebeck U, Modrow S. *Clin Infect Dis.* 2009 Dec
- 4) Treatment of a patient with shock complicating severe falciparum malaria: a case report. Kuethe F, Pfeifer R, Rummler S, Bauer K, *Kamvissi V*, Pfister W. *Cases J.* 2009 Apr 20
- 5) Combined use of 68Ga-DOTATATE and 18F-FDG PET/CT to localize a bronchial carcinoid associated with ectopic ACTH syndrome. *Därr R, Zöphel K, Eisenhofer G, Abolmaali N, Gastmeier J, Wiczorek K, Jelinek V, Kamvissi V, Bornstein SR, Hofbauer LC.* *J Clin Endocrinol Metab.* 2012 Jul

- 6) Safety and feasibility of a diagnostic algorithm combining clinical probability, d-dimer testing, and ultrasonography for suspected upper extremity deep venous thrombosis: a prospective management study. *Kleinjan A, Di Nisio M, Beyer-Westendorf J, Camporese G, Cosmi B, Ghirarduzzi A, Kamphuisen PW, Otten HM, Porreca E, Aggarwal A, Brodmann M, Guglielmi MD, Iotti M, Kaasjager K, Kamvissi V, Lerede T, Marschang P, Meijer K, Palareti G, Rickles FR, Righini M, Rutjes AW, Tonello C, Verhamme P, Werth S, van Wissen S, Büller HR.* Ann Intern Med. 2014 Apr
- 7) Lipidomic profiling at the interface of metabolic surgery and cardiovascular disease. *Ban RH, Kamvissi V, Schulte KM, Bornstein SR, Rubino F, Graessler J.* Curr Atheroscler Rep. 2014 Nov
- 8) Outpatient or inpatient treatment for acute pulmonary embolism: a retrospective cohort study of 439 consecutive patients. *Werth S, Kamvissi V, Stange T, Kuhlisch E, Weiss N, Beyer-Westendorf J.* J Thromb Thrombolysis. 2014 Oct
- 9) Incretins or anti-incretins? A new model for the "entero-pancreatic axis". *Kamvissi V, Salerno A, Bornstein SR, Mingrone G, Rubino F.* Horm Metab Res. 2015 Jan
- 10) Creating a "Transcampus" in Diabetes Research Between King's College London and the Technische Universität Dresden: Update on Islet Biology and Transplantation. *Bornstein SR, Amiel SA, Rubino F, Mingrone G, Kamvissi V, Solimena M, Bonifacio E, Jones P, Schwarz P, Birkenfeld AL, Behrens A, Barthel A, Lechler R, Peakman M.* Horm Metab Res. 2015 Jan