

KING'S  
*College*

LONDON



# Introduction to King's

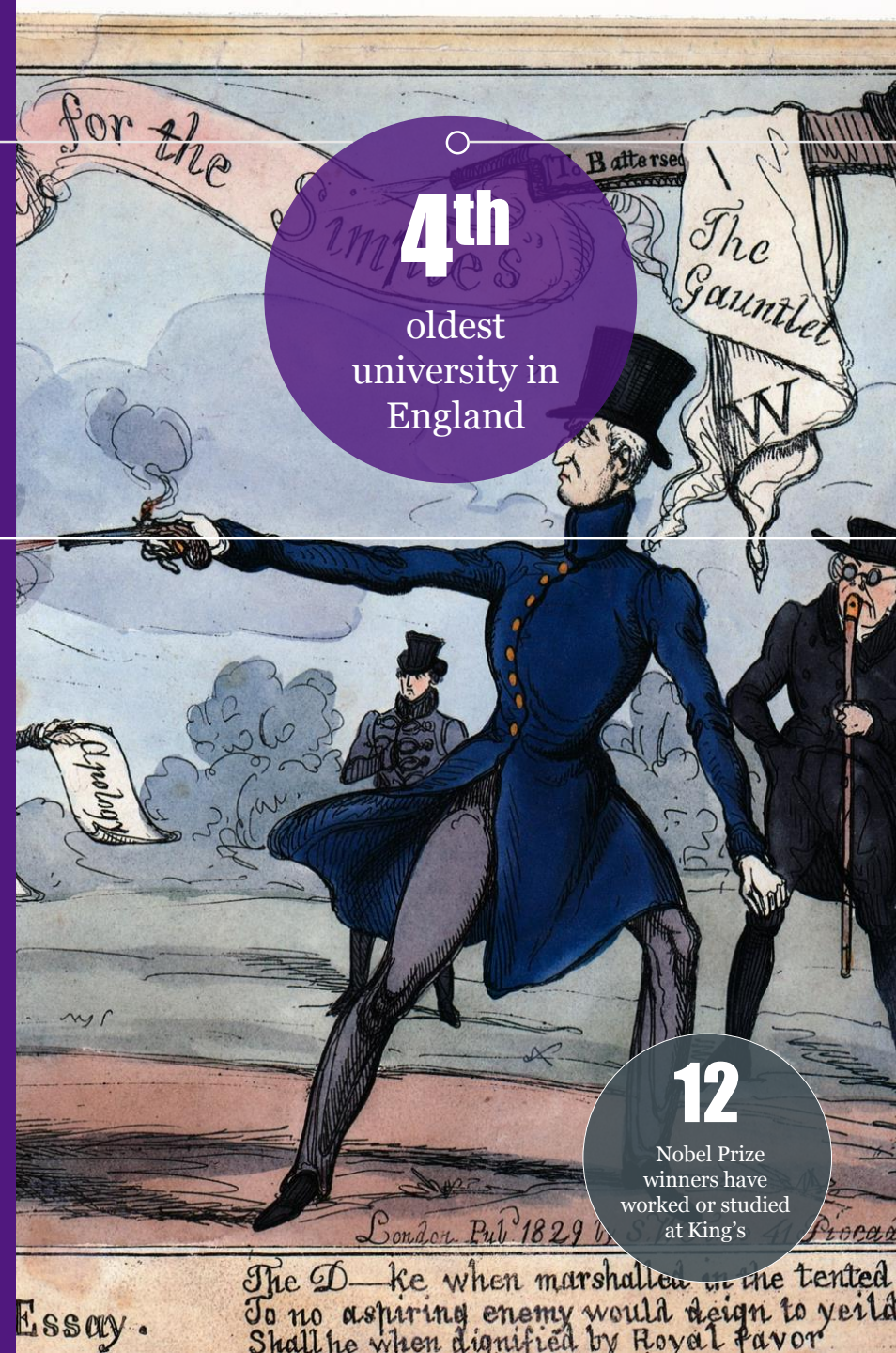
Helen Litvak,  
Director of Brand & Marketing

King's College London



Why choose King's?  
Proud heritage

- Founded in 1829 by King George IV & Duke of Wellington
- The Battle of Battersea Fields
- A long tradition of teaching arts and sciences
- Founding college of the University of London



4th  
oldest  
university in  
England

12  
Nobel Prize  
winners have  
worked or studied  
at King's

# 9

Faculties,  
institutes and  
schools of study

*Why choose King's?*

## Contemporary outlook

### SCIENCE, TECHNOLOGY, ENGINEERING & MATHS

- BIOMEDICAL & LIFE SCIENCES
- CHEMISTRY
- COMPUTER SCIENCES
- ENGINEERING
- MATHEMATICS
- PHYSICS

### HEALTH

- DENTISTRY
- MEDICINE
- NURSING
- MIDWIFERY
- PSYCHOLOGY
- PHARMACY
- OTHER HEALTH PROFESSIONS

### POLITICS, ECONOMICS & SOCIETY

- INTERNATIONAL RELATIONS & DEVELOPMENT
- POLITICS & ECONOMICS
- CONFLICT & SECURITY
- SOCIETY & POLICY
- GEOGRAPHY & THE ENVIRONMENT

### MANAGEMENT, FINANCE & LAW

- MANAGEMENT
- LAW

### ARTS & HUMANITIES

- ARTS, CULTURE & MEDIA
- HISTORY & CLASSICS
- LANGUAGES & LITERATURE
- PHILOSOPHY & RELIGION

- Global institution with students representing more than 150 countries
- Actively investing in the future

*Why choose King's?*

## Research to inform and innovate

### Research-enhanced learning

- Your teachers are also our researchers
- Independent research throughout your studies

### Our research:

- The Georgian Papers Programme
- The Role of Monarchy in Modern Britain
- International Centre for the Study of Radicalisation and Political Violence

23<sup>rd</sup>

in the world

*(QS World University  
Rankings 2017)*



Why choose King's?  
Serve to shape  
and transform

**MEGAN BEECH**



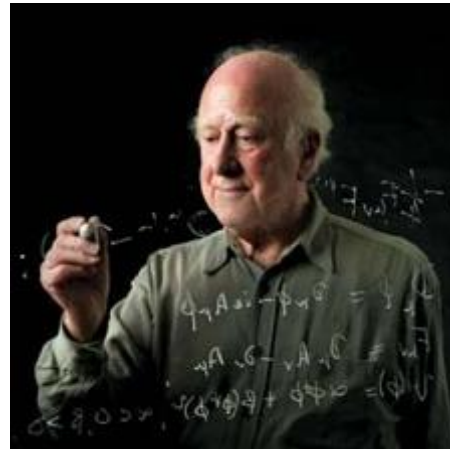
English  
Literature BA

Theology BA & MA  
1962-1966

**ARCHBISHOP  
DESMOND TUTU**



**PROFESSOR  
PETER HIGGS**



Physics BSc &  
MSc | 1950

# Why choose King's? London locations

- 1 King's Strand campus
- 2 King's Bush House
- 3 Royal Courts of Justice
- 4 Maughan Library
- 5 Palace of Westminster
- 6 London Eye

- 7 South Bank arts complex
- 8 Tate Modern
- 9 St Paul's Cathedral
- 10 King's Waterloo Campus
- 11 Shakespeare's Globe
- 12 Waterloo station

- 13 St Thomas' Hospital
- 14 City of London financial district
- 15 King's St Thomas' Campus
- 16 King's Guy's Campus
- 17 The Shard
- 18 Guy's Hospital

**KEY**  
● King's locations  
● London landmarks



King's Deamark Hill Campus, King's College Hospital and South London and Maudsley Hospital  
Approximately 3 miles (5km) south-east

*Why choose King's?*

## A civic university at the heart of London

- The London Advantage
- Unique resources on your doorstep
- Exciting lifestyle and culture
- The power of networking
- Global employment opportunities



*Find out more by speaking to our student ambassadors*

**5<sup>th</sup>**

Best student city in the world

*(QS Best Student Cities 2017)*

**5**

Campuses in the heart of London



*Why choose King's?*

# Educate to inspire and improve

- Lectures, seminars, labs
- Enhanced personal support for students
- Interdisciplinary – choice beyond core subjects
- Research



*Find out more by speaking to our student ambassadors*



*Why choose King's?*

## An extraordinary student experience

- KCLSU
- Electives & Study Abroad
- Internships
- Research opportunities
- Modern language courses
- Co-curricular opportunities
- Careers development & professional skills
- Advice and support

**300+**

Societies,  
activity groups  
and sports  
clubs

**150+**

nationalities in  
King's active  
student  
community

