

Developmental Psychology & Psychopathology MSc

2019 entry

Duration: full-time: one year

Study mode: full-time

www.kcl.ac.uk/study/postgraduate/taught-courses/developmental-psychology-psychopathology-msc.aspx



This PDF was produced in January 2019.

You will develop knowledge about the causes of typical and atypical psychological development, the standard psychological therapies and treatments available, and research methods and statistics relevant to this field. The course will provide you with both a research and clinical focus.

Benefit from comprehensive coverage of the field exploring how biological, behavioural and cognitive processes, along with family and wider social forces, can affect typical and atypical development. The course is ideal if you plan to work/are working in mental health with young people, or you are looking to progress to the DClinPsy or a PhD. Placements and clinical observerships are available.



Key benefits

- Learn how to characterise typical and atypical behaviours across the life span.
- Learn how to identify, describe and manage behavioural traits in common disorders such as Autism and ADHD.
- Become skilled in using state-of-the-art research methods skills, and access world-renowned longitudinal data sets.
- Explore ways in which technology could help improve coordination, quality, personalisation and geographical reach of care.
- Learn from world-leading researchers/clinicians at the IoPPN, with 12 of the world's most highly cited scientists in this field eg Robin Murray, Robert Plomin, Michael Rutter.
- King's is ranked 2nd in the world for psychology and psychiatry – US News, Best Global Universities.

Course details

The course will train graduates to take up roles within different organisations where knowledge of mental health is required by teaching subjects that are relevant to the characterisation of typical and atypical behaviour, the causes and development of mental health problems in children and young people (including neurodevelopmental disorders) and an understanding of the most standard psychological therapies used in clinical practice and available support service systems. In addition, the course will provide you with a solid understanding of the most recent research methods applied in this area. The course comprises four components:

- **Typical & Atypical Development:** Covers typical brain development and development of cognitive functions and social behaviours relevant to neurodevelopmental disorders, followed by a description/classification of the most common mental health problems in children and adolescents,

including Autism, ADHD, conduct disorders, eating disorders, depression/anxiety, and antisocial behaviour. Students will also learn about the genetic, environmental/social factors that determine onset as well as persistence of these mental health problems across developmental stages.

- **Research Methods & Statistics:**
Covers general statistics as well as more specialised methods/statistics applied in developmental neurophysiology, neuroimaging, cognitive neuroscience and (behavioural) genetics.
- **Therapy & Treatment:**
Covers the theoretical basis of mainstream psychological therapies used in clinical practice in infants, children, adolescents and their families. You will also learn why some therapies are indicated and preferred over others and the available support service systems. This module can be replaced by a credit-bearing placement or clinical observership.
- **Dissertation Project:**
This can be a research project or systematic review or clinical observership project or a communicating science project, with the possibility to link the project to your placement/observership.



Teaching

You will be taught through a mix of lectures, seminars and tutorials. The table will depend on the modules picked, but each combination of modules within the components C1-C4 listed below will add up to 180 credits:

Module name	Lectures (hours)	Seminars/tutorials/ (hours)	Field/lab/studio/supervised learning (hours)	Self-directed study (hours)	Total (hours)
C1: Typical & Atypical Development (60 credits)					
CORE1: Perinatal & Infant Mental Health (30 credits)	30	16	–	254	300
CORE2: Child & Adolescent Mental Health (30 credits)	35	5	–	260	300
C2: Research Methods & Statistics (30 credits)					
CORE: General Statistics (15 credits)	24	24	–	102	150
+ Opt1: Twin Model-fitting (15 credits)	10	20	–	120	150
or Opt2: Research Methods in Infants & Children (15 credits)	19	2	7	122	
or DL: Reviews & Critical Analysis (15 credits)	–	–	–	150	
C3: Therapy & Treatment (30 credits)					
Opt1: Psychological Approaches to Treatment (30 credits)	34	4	6	256	300
or Opt2: Placement/Internship (30 credits)	10	5	175	110	300
C4: Dissertation Project (60 credits)					
	–	–	400	200	600

Typically, one credit equates to 10 hours of work. DL = distance learning option

Assessment

You are assessed through a combination of coursework and examinations and may typically expect assessment by:

Year	Exam	Coursework	Practical
1	40%	50%	10%

Regulating body

King's College London is regulated by the Office for Students.

Course structure

Courses are divided into modules. Each year you will normally take modules totalling 180 credits.

Required modules

You are required to take:

Component 1:

Typical & Atypical Development (60 credits)

- Perinatal & Infant Mental Health (30 credits)
- Child & Adolescent Mental Health (30 credits)

Component 2:

Research Methods & Statistics (30 credits)

- General Statistics (15 credits)
+ *either*
- Twin Model Fitting (15 credits)
or
- Research Methods in Infants & Children (15 credits)
or
- Reviews & Critical Analysis (15 credits)

Component 3:

Therapy & Treatment (30 credits)

or Placement (30 credits)

Component 4:

Dissertation Project (60 credits)

Optional modules

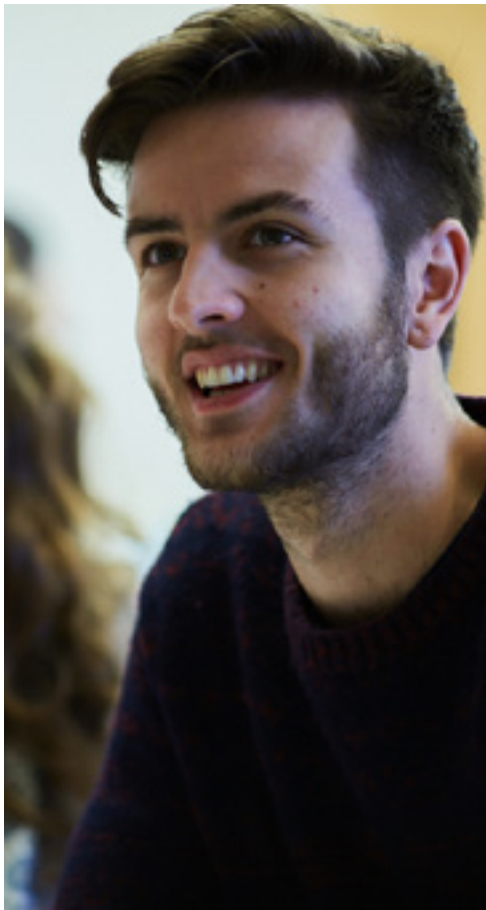
The course has some flexibility in that you can choose different combinations of modules in component 2 and 3. In component 2 there is also the possibility for you to choose a distance learning option.

King's College London reviews the modules offered on a regular basis to provide up-to-date, innovative and relevant programmes of study. Therefore, modules offered may change. We suggest you keep an eye on the course finder on our website for updates.

Location

Our course is primarily taught at the King's College London Denmark Hill Campus.

The location of optional placements and/or clinical observerships is variable.



Career prospects

In addition to the core teaching, the optional module selection, the optional placement experience and dissertation project, the course provides opportunities to develop your knowledge into different interests and career pathways. This may help you to prepare to study a PhD or Doctorate in Clinical Psychology or to pursue employment in professional settings where subject knowledge is central to your work, eg in a science or academic career or in clinical settings.

You will also develop skills to take up employment in other settings working with children and young people where knowledge of mental health problems and therapies are required. These could be employment in social care settings eg welfare officers in youth organisations, schools and community centers; as family support workers; or employment in the public sector eg police consultant, parliamentary officer of science and technology.

You may also enter employment where subject knowledge is important to succeed in the job, but not the primary activity, eg employment in science communication/media within organisations involved with communicating health problems in young people to increase understanding of public awareness. Or, where learning from the degree is applied more broadly, eg role in government office of statistics; fundraiser for charity, science editor, industry.



Fees and funding

Full-time tuition fees – UK

The UK tuition fees for the 2019–20 academic year are available on the course web page.

Please note that the tuition fees for subsequent years of study may be subject to increases in line with King's terms and conditions.

Full-time tuition fees – EU

Students starting their programme in 2019–20 (September 2019) who are eligible to pay EU fees will pay the same rate of tuition fees as UK students. This will apply for the duration of their programme, but may be subject to change by the UK Government for subsequent cohorts from 2020–21.

The UK tuition fees for the 2019–20 academic year are available on the course web page.

Please note that the tuition fees for subsequent years of study may be subject to increases in line with King's terms and conditions.

Full-time tuition fees – International

The International tuition fees for the 2019–20 academic year are available on the course web page.

Please note that the tuition fees for subsequent years of study may be subject to increases in line with King's terms and conditions.



Deposit

When you receive an offer for this course you will be required to pay a non-refundable deposit to secure your place. The deposit will be credited towards your total fee payment.

The UK/EU deposit is £500.

The International deposit is £2,000.

For further information, please visit the fees and funding section of our website: www.kcl.ac.uk/study/postgraduate/fees-and-funding/index.aspx

Additional costs

In addition to your tuition fees, you can also expect to pay for:

- books if you choose to buy your own copies
- DBS checks
- library fees and fines
- personal photocopies
- printing course handouts
- society membership fees
- stationery
- travel costs for travel around London and between campuses
- graduation costs.

Disclaimer

Although this PDF was up-to-date at the time it was produced, please make sure you check our website www.kcl.ac.uk/study or contact us directly for the very latest information before you commit yourself to any of our courses.

Contact us

Tel +44 (0)20 7836 5454